

MULTI-FUNCTIONAL, ERGONOMIC  
& SIMPLE TO INSTALL SOLUTIONS  
TO LIVE, WORK AND MEET




INTEGRATED  
SOLUTIONS FOR  
FURNITURE

INCARA™

# INCARA™

Incara is a range of functional, ergonomic wiring devices dedicated to any modern, flexible workspace, from office to hotel, café, airport or any other shared working environment.



WITH INCARA, USERS CAN GET TO WORK IMMEDIATELY. THEY HAVE BOTH POWER AND DATA AVAILABLE WITHIN EASY REACH FOR CONNECTING THEIR EQUIPMENT.

The range is designed with the professional installer and the end-user in mind, for simple installation, set-up and operation. Incara can be integrated into all types of furniture seamlessly, so end-users can get on with their daily lives.

Legrand, the leading manufacturer of wiring accessories, brings all its know-how, quality assurance and a wide range of functions and finishes which allow many elements of Incara to be customised upon request.

In timeless shades or coloured, Incara's attractive, modern finishes lend a touch of class to any space.

Multi-functional,  
easy to install and  
designed for simplicity  
of operation.



# INCARA

A MARK OF SUCCESS .....	2/3
ECO-DESIGN .....	4/5
CONFIGURED SOLUTIONS .....	6/7
CONNECTED SOLUTIONS .....	8/11
INSTALLATION LOCATIONS .....	12/13
INCARA™ DISQ 60 .....	16/17
Recharge anywhere, at any time	
INCARA™ DISQ 80 .....	18/19
Essential functions for mobile users	
INCARA™ DISQ 80 QI .....	20/21
Cordless charging anywhere	
INCARA™ DISQ'IN .....	22/23
Elegance and speed of installation	
INCARA™ POP-UP .....	24/25
Attractive appearance and easy to use	
INCARA™ MULTILINK .....	26/27
A configuration for every situation	
INCARA™ FLIP-UP .....	28/29
The premium solution for meeting rooms	
INCARA™ TOP ACCESS .....	30/31
The essential solution for meeting rooms	
INCARA™ TOWER 60 .....	32/33
Convenient and compact	
INCARA™ TOWER 120 .....	34/35
360° accessibility	
INCARA™ ELECTR'ON .....	36/37
Unique design for unique environments	
INCARA™ ON DESK .....	38/39
Flexibility and convenience	
INCARA™ LINK'ON .....	40/41
Mobile and scalable	
CLIP-ON MULTI-OUTLET .....	42/43
Power your devices and keep your workspace clutter-free	
MULTI-OUTLET CHARGING STATION .....	44/45
Compact and practical with wireless charger	
MULTI-OUTLET WITH TABLET STAND .....	46/47
Dual-purpose extension	
SELECTION GUIDE .....	48/53
CATALOGUE PAGES .....	54/72



INCARA™

# A mark of success

## ABOUT US

Legrand is the global specialist in electrical and digital building infrastructures. Our purpose is to improve life by transforming the spaces where people live, work and meet with electrical and digital infrastructures and connected solutions that are simple, innovative and sustainable. When you choose Legrand, you put our powerful worldwide presence and guaranteed global expertise to work for you. And you are sure to find the solutions you need among our innovative applications in new business segments.

With Legrand, you have the advantage of single logistics and distribution channels ensuring optimum lead times and mass production capability.

## SOLUTIONS FOR ANY KIND OF PROJECT

The way we work is constantly changing, as are the technical requirements that modern office buildings have to fulfil: areas for people to work independently are just as important as shared offices, meeting rooms and relaxation areas. Easy and flexible access to power or data sockets whenever and wherever they are needed is a must to ensure seamless transitions between all these different ways of working. Legrand's Incara range of integrated solutions for furniture makes this possible. These flexible, stylish products are easy to install and can be integrated seamlessly into any kind of space.



## LEGRAND DESIGN, A MARK OF SUCCESS

Our products are used daily by people of all ages and different cultural backgrounds all around the world. These everyday objects add a touch of quality to daily life through functionality and a seamless user experience. Design is not only about aesthetics, it is about providing solutions - that is why users and real life situations are at the heart of our process. We are always striving to meet new needs and transform our findings into smart, effective solutions that combine practicality with comfort.

## SUSTAINABILITY AND QUALITY

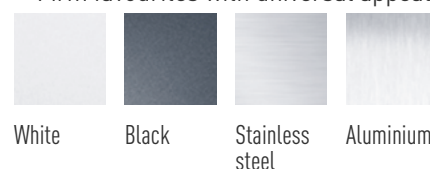
The economic and environmental challenges we face demand an increasingly sustainable approach to designing, building and retrofitting buildings. All our products are carefully designed right down to the smallest detail to ensure their robustness and durability contributes to a sustainable world. Our designers are always mindful of the circularity of our products when designing new solutions, considering the full life cycle from manufacturing methods and materials to use and recycling. But quality is our overriding priority. The best way to help the environment is to choose a product that will last.

## COLOURS, MATERIALS AND FINISHES

We take our inspiration from a wide variety of sources, including the worlds of electronics, fashion and transport, to design functional products with lasting appeal that are adapted to the environment in which they are used. Made from materials selected for their appearance and performance (impact resistant plastics, high quality aluminium), the Incara range offers three different categories of finish.

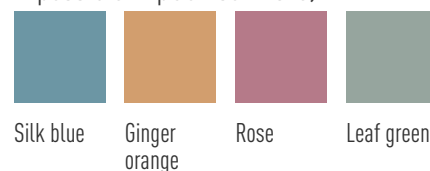
### TIMELESS

Firm favourites with universal appeal



### COLOURS

Available on request (selection possible in pCon software)



### MATERIALS

High-quality materials in line with the latest trends



# Eco-design:

# An approach integrating circular economy principles



## LEGRAND GROUP: FOUR MAIN AREAS OF ACTION TO IMPROVE LIVES

Legrand's corporate social responsibility (CSR) is based on four focal areas which guide and structure its commitments. Published in March 2022, the 2022-2024 CSR roadmap details the 15 priorities the Group has set itself to meet its CSR commitments and challenges, and defines the objectives to be achieved :



LEGRAND HAS BEEN AWARDED THE ECOVADIS PLATINUM MEDAL, THE HIGHEST DISTINCTION AWARDED TO THE TOP 1% OF THE BEST PERFORMING COMPANIES IN TERMS OF CSR AMONG ALL COMPANIES ASSESSED BY ECOVADIS.



## PROMOTE DIVERSITY AND INCLUSION

- Gender diversity
- 'Diversity & Inclusion' labelling
- Employability of Early-in-careers
- Diversity and inclusion among suppliers

## REDUCE OUR CARBON FOOTPRINT

- CO<sub>2</sub> emissions avoided for our customers
- Direct and indirect CO<sub>2</sub> emissions (scopes 1 & 2)
- Indirect CO<sub>2</sub> emissions (scope 3)

## DEVELOP A CIRCULAR ECONOMY

- Use of recycled materials
- Phase out single-use plastic
- Environmental declarations

## BE A RESPONSIBLE BUSINESS

- Customer satisfaction
- Business ethics/compliance
- Employability and skills development
- Safe workplace
- Expanded social coverage

FIND OUT MORE  
ABOUT OUR CSR STRATEGY

> [www.legrandgroup.com](http://www.legrandgroup.com)





## ECO-DESIGN

Legrand's eco-design approach aims to reduce the environmental impact of its products from design to end of life, mainly through the choice of raw materials and optimised logistics.

The Incara range has been designed with cardboard packaging wherever possible to meet these environmental goals.



## PRODUCT ENVIRONMENTAL PROFILE

At Legrand, we believe that it is our responsibility to inform users about the environmental impact of the Group's products. Reducing the impact of buildings on the environment starts with design choices. Informing users about the environmental impact of the products they use is therefore a top priority. The product environmental profile (PEP) is a reference tool to measure the environmental impact of electrical products.

PEPs are already available for some products.



## A SUSTAINABLE OFFER

Incara solutions with integrated Mosaic functions are scalable over time. These totally modular functions can be replaced to meet new user needs as technology evolves - USB Type-C (fast charging), power rating, etc. - and repositioned in your furniture to give them a second life.

The configurable Incara connected offer can be incorporated into your workspace in a fully integrated and sustainable way, allowing you to measure and optimise your power consumption (see pages 8 to 11).



2 USB Type-C ports

USB Type-C port with 30W Power Delivery

2 USB Type-A ports

# INCARA™

# Configured solutions

## TO MEET ALL YOUR NEEDS

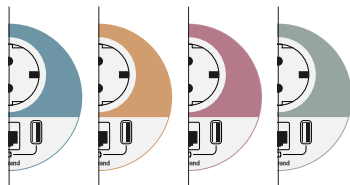
The configuration and customisation options available with the Incara range mean that it can be adapted to any environment or application, meeting your most challenging requirements.

- Choose the colours to suit your furniture or customise your work spaces.
- Configure the products from among 250 Mosaic programme functions.
- Adapt the type of power supply, the length of the power cord or the dimensions of your products.

### INCARA DISQ 60 / DISQ 80 / DISQ'IN / ELECTR'ON



Other colours



Version



Power cords

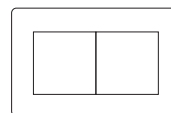
- Plug
- Wieland connector
- Length  
2 m/3 m

### INCARA MULTILINK / ON DESK / FLIP-UP / POP-UP

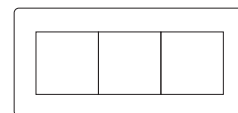


Lengths (maximum of 28 modules)

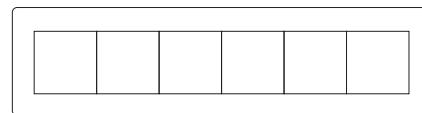
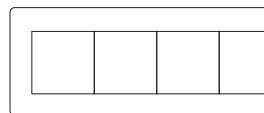
4 modules



6 modules



8 modules



12 modules







**INCARA AVAILABLE  
IN PCON SOFTWARE**



If you have a project to fit out an office or incorporate electrical accessories into office furniture and you are a professional working in the office furniture sector (architect, space planner, distributor, etc.), you can access the Legrand catalogue and configure all the Incara products easily yourself:

- Simply choose your product, the functions you require and the finish that matches your furniture.
- You will then receive the OFML files, a visual representation of your configuration and a detailed quote instantly.
- You will also find the relevant product data sheets, installation guides, brochures and videos.

### KNOW MORE

**Our customisation service:**

- Response within 48 hours
- No minimum order
- Available within 7 to 15 working days depending on the country for the first 50 units (variable depending on the product)



**A choice of functions from the Mosaic range**

Choosing Mosaic means choosing a stylish, reliable, standard stocked range of products that are easy to install.

More than 250 functions in 45x45 format can be integrated into any support. All the main functions can be integrated on pCon. For other functions, please consult us.



# INCARA™

# Connected solutions



With connected solutions integrated into furniture and the Home + Control app, you have an innovative system to control and monitor the electrical installation in your office to **optimise comfort and energy management**. **Lighting, roller shutters and electrical office equipment** can all be controlled locally from your workstation or remotely using your smartphone and/or voice (via a voice assistant). The app also gives you the option to customise life scenes, schedule equipment operation between certain times of the day, **monitor power consumption** in detail and set alerts on a smartphone.



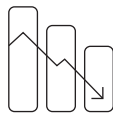
REMOTE CONTROL



VOICE CONTROL



EASY SCHEDULING



SMART ENERGY MANAGEMENT



THE HOME + CONTROL APP IS COMPLETELY FREE AND AVAILABLE FROM THE APP STORE AND GOOGLE PLAY.



## PRODUCTS

Integrated connected solutions for furniture are available in preconfigured versions in the Incara Multilink and Incara On Desk ranges, equipped with Mosaic™ with Netatmo® connected functions. You can either define your desired configuration in the pCon software or contact our customisation service for more specific requirements.

\* Mosaic™ with Netatmo: Legrand's Mosaic™ connected range can be controlled with the Home + Control app.



# INCARA™

# Connected solutions

## PRINCIPLE OF A LEGRAND CONNECTED INSTALLATION

A smooth user experience, with simple solutions to install and use, making life easier.

Lights, roller shutters and power supplies for office equipment (PCs, monitors, smartphones, desk lamps, etc.) can all be controlled in one easy action from your desk. No need for individual remote controls for each different function. No matter what electrical equipment is integrated in your Legrand connected installation, you can see how much power is consumed by the whole installation or by individual products in the Home + Control app.

You can also integrate control of power outlets in life scenes to make your daily life easier. Incara connected solutions can be used to create a brand new installation or they can be integrated in an existing Legrand installation equipped with “with Netatmo” connected products.



**The Legrand Cloud** hosts and manages data and keeps it secure.



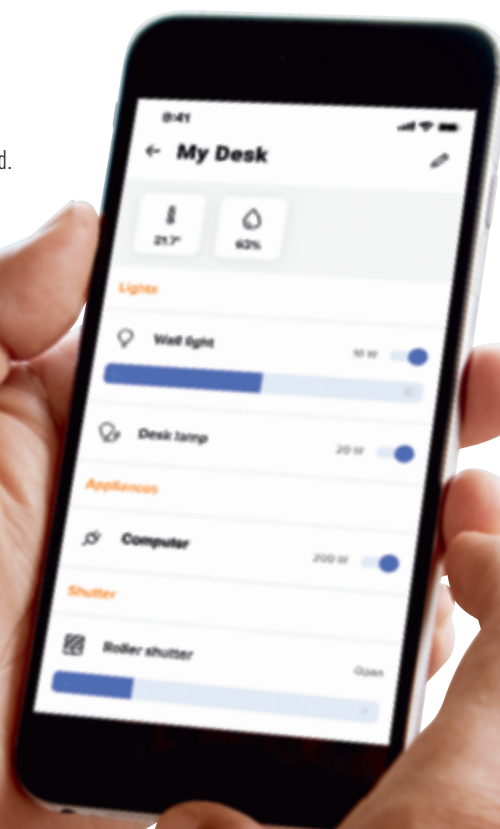
Wi-Fi router



**The gateway** acts as an interface between the Wi-Fi router and the Legrand connected products. It needs to be connected to a power outlet. Other gateway versions are also available in the “with Netatmo” wiring accessory ranges or for integration in the distribution board.



**The Home + Control app** is used to control offices remotely and stay informed.







**CONFIGURATION EXAMPLE:  
CONNECTED INCARA ON DESK,  
INSTALLED AT THE  
WORKSTATION**

- ① Wireless roller shutter and blind switch (battery powered)
- ② Wireless light switch (battery powered)
- ③ Connected 2P+E sockets and USB A+C charger (power supply for PC, monitor, smartphone, desk lamp, etc.)
- ④ Module for connected socket

**KNOW MORE**

**Examples of add-on products\***



**Connected micromodule for roller shutters.** Provides wireless connected capability for an electric shutter or blind.



**Connected micromodule for lighting.** For installation in a DCL box close to a lamp. Provides wireless connected capability for lighting.

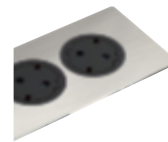


AND/OR

**Wireless infrared motion sensor.** Allows connected electrical devices and lighting to be controlled automatically.

\* To be ordered separately depending on functions required

# Installation locations



## OFFICES

Incara Disq 60  
(p. 16)

Incara Disq 80  
(p. 18)

Incara Disq 80 Qi  
(p. 20)

Incara Pop-up  
(p. 24)

Incara Disq'In  
(p. 22)

Incara Multilink  
(p. 26)

COLLABORATIVE SPACES



-

-

-

SHARED OFFICES

-



PRIVATE OFFICES

-



ACOUSTIC BOOTHS



-

-



MEETING ROOMS

-



-



## HOTELS

COMMON AREAS



-



BEDROOMS



-

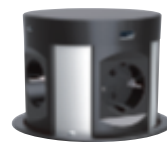
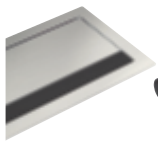
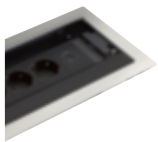


MEETING ROOMS

-







**Incara Flip-up**  
(p. 28)

**Incara Top Access**  
(p. 30)

**Incara Link'On**  
(p. 40)

**Incara Electr'On**  
(p. 36)

**Incara Tower 60**  
(p. 32)

**Incara Tower 120**  
(p. 34)

**Incara On Desk**  
(p. 38)

-

-

-



●

-

-

-

-

-

●

-

-



-

●

-

●

-

-



-

-

-

-

-

-

-



-

●

●

-

-

-

-

-

-

-

-

-

-

-

●

-

-

-



-

-

●

-



# Installation locations



## PUBLIC SPACES

Incara Disq 60  
(p. 16)

Incara Disq 80  
(p. 18)

Incara Disq 80 Qi  
(p. 20)

Incara Pop-up  
(p. 24)

Incara Multilink  
(p. 26)

EDUCATION



-

-



LIBRARY



-

-



TRANSPORT



CAFÉ



-

-

SHOPS



-



## RESIDENTIAL

KITCHEN



-

-



-

HOME OFFICE

-



-



-



**Incara  
On Desk**  
(p. 38)

**Incara  
Tower 60**  
(p. 32)

**Multi-outlet  
charging station**  
(p. 44)

**Multi-outlet with  
tablet stand**  
(p. 46)

**Clip-on  
multi-outlet**  
(p. 42)

●

-

-

-

-

●

-

-

-

-

-

-

-

-

-

-

-

-

-

-

-

-

-

-

-

-

☆

-

●

-

-

-

☆

●

●

INCARA™

# Disq 60

Recharge anywhere,  
at any time





# Disq 60

**ncara Disq 60 adapts to any environment offering a power socket or a USB charger. An attractive, discreet solution that is quick to install.**

### MULTIPLE APPLICATIONS

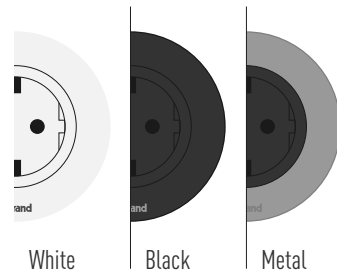
Based on a standard 60 mm cut-out, it can be fixed both horizontally and vertically on any type of support (patented Legrand system), even thin ones (1 mm min).  
Supplied with cord equipped with a 2P+E plug or a Wieland connector.



### WIDE SELECTION OF FINISHES

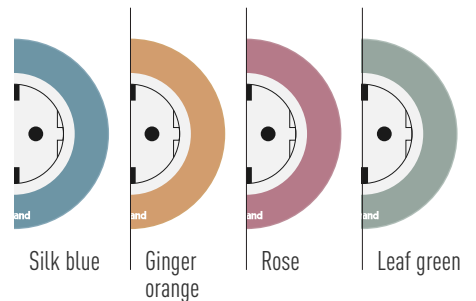
Understated, discreet products and finishes that blend in seamlessly with any working environment.  
The flush socket (patented Legrand system) looks more attractive and is easy to clean.

### TIMELESS FINISHES



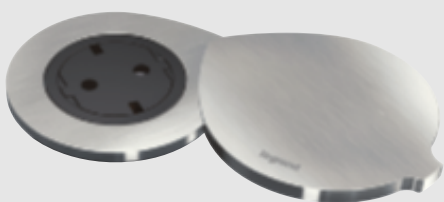
### COLOURS

Available on request (selection possible in the pCon software).



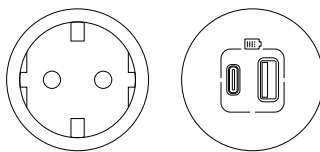
### KNOW MORE

Also available with a pivoting cover for better protection in the event of accidental contact with liquids.



### ESSENTIAL FUNCTIONS WITHIN EASY REACH

2P+E sockets or 15 W USB A+C charger to meet the connection needs of mobile users quickly and easily.



2P+E socket

USB A+C charger

INCARA™

# Disq 80

Essential functions  
for mobile users





# Disq 80

**T**o meet the needs of mobile users, the Incara Disq 80 module combines essential functions in a single place.

## QUICK INSTALLATION

The Incara Disq 80 module replaces the existing cable outlet in the furniture (80 mm Ø cut-out).

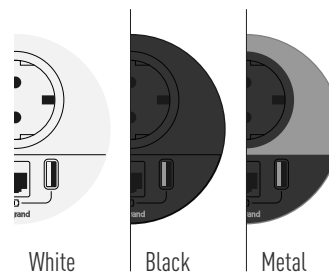
Supplied with cord equipped with a 2P+E plug or a Wieland connector.



## MODERN DESIGN AND FINISHES

Product designed to blend in seamlessly with any office furniture. The flush socket (patented Legrand system) looks more attractive and is easy to clean.

## TIMELESS FINISHES



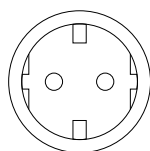
White

Black

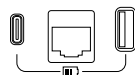
Metal

## ESSENTIAL FUNCTIONS IN A COMPACT SPACE

2P+E sockets, 15 W USB A+C charger and RJ 45 Cat. 6 UTP socket or cable outlet to meet the connection needs of mobile users quickly and easily.



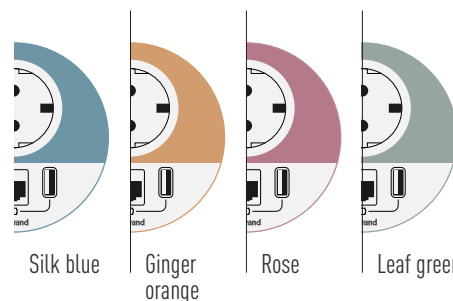
2P+E socket



USB A+C charger and RJ 45 socket

## COLOURS

Available on request (selection possible in the pCon software).



Silk blue

Ginger orange

Rose

Leaf green

## KNOW MORE

Incara Disq 80 modules are also available in a version with a cover for discrete integration and better protection in the event of accidental contact with liquids.



INCARA™

# Disq 80 Qi

Wireless charging anywhere



# Disq 80 Qi

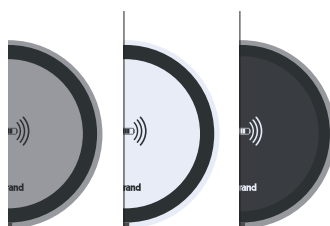
**At** home, at work, when travelling... your smartphone needs regular charging to get the best performance from it. With the Legrand Incara Disq 80 Qi wireless power charger, you can forget about carrying bulky plugs around.

## QUICK INSTALLATION

Extra-slim, designed for mounting horizontally on furniture, Incara Disq 80 Qi replaces the existing cable outlet in the furniture (80 mm Ø cut-out).

## ELEGANT DESIGN AND FINISH

Its attractive finish blends into a meeting room table, on an office work surface, in any reception or waiting area, etc. Can be printed with your desired logo, on request.



Aluminium | White\* | Black\*

## KNOW MORE

- Available in a "Ready to install" kit (1 or 4 chargers + suitable power supply) or in "For customer assembly" version (25 W or 100 W power supply to be ordered separately).
- Supplied with a "Recharge at your convenience" sticker.
- 15 W - IP 44 - IK 08 conforming to WPC Qi standard, SELV Class II.



**ALLOWS PARTIAL OR FULL CHARGING FOR A SMARTPHONE WITH A Qi WIRELESS RECEIVER**



\*Finishes only available in "For customer assembly" version.





INCARA™

# Disq'In

Elegance and speed  
of installation



# Disq'In

ncara Disq'In blocks combine elegance, convenience and speed of installation.

They enhance your work space or your meeting room. Users are provided with the essential functions to power their mobile devices.

## QUICK INSTALLATION

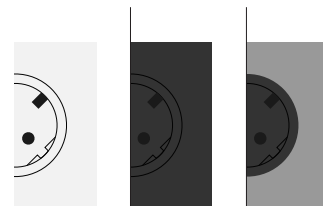
The innovative quick-fixing system saves a great deal of installation time (Legrand patented system). No tools required.



## SLEEK, CONTEMPORARY DESIGN

Wide selection of metal plates which blend in harmoniously with existing meeting room interiors. The flush socket (patented Legrand system) looks more attractive and is easy to clean.

## TIMELESS FINISHES



White

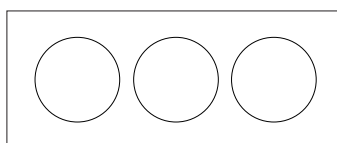
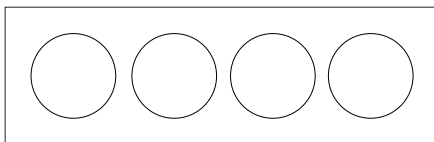
Black

Metal

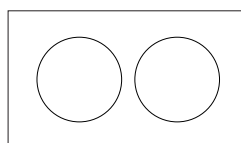
## FUNCTIONALITY AND FLEXIBILITY

Available in 2, 3 and 4-gang versions pre-equipped with power sockets, USB A+C charger, HDMI socket. Other versions available in preconfigured version.

4-gang



3-gang

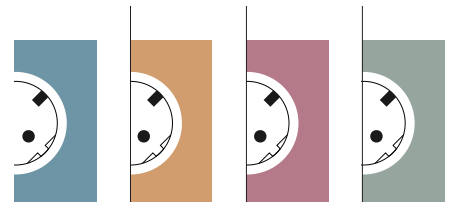


2-gang

## COLOURS

Available on request (selection possible in the pCon software).

pCon



Silk Blue

Ginger orange

Rose

Leaf green



INCARA™

# Pop-up

Attractive appearance  
and easy to use





# Pop-up

**Pop-ups provide real ease of use and quick connection for mobile devices: laptops, smartphones, tablets, audio and video systems, etc. Users have a choice of both power and data connections within easy reach.**

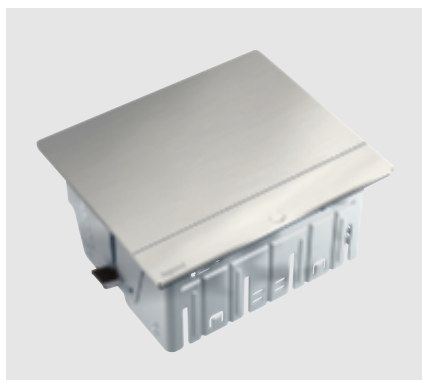
## KNOW MORE

Pop-ups can take a wide range of functions available in the Mosaic range, thus complying with specific requirements, such as fast charging of portable devices. Mosaic 30 W USB Type-C Power Delivery chargers are specifically designed to charge all devices even faster! They can optimise charging by automatically selecting the most suitable voltage for the device battery.



## SLEEK DESIGN

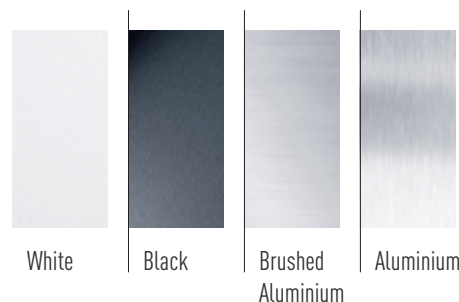
Extra-slim format to blend discreetly into the furniture. The flush-mounted part takes up little space, even allowing installation above a drawer.



## ELEGANT FINISHES

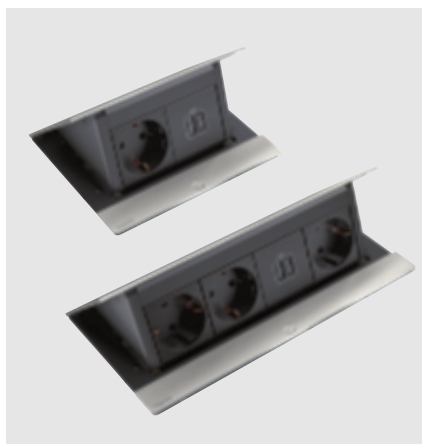
A set of finishes in harmony with both the furniture and the décor.

### TIMELESS FINISHES



## FUNCTIONALITY AND FLEXIBILITY

Available in 4, 2 x 4 and 8-module versions to be equipped or pre-equipped with power or data Mosaic functions. 4-module pop-ups are also available in a version with integral wireless power charger.



## SAFETY AND EASE OF USE

Wide button and cover with damper for smooth opening (patented Legrand system). IP44 version (with closed cover) for good protection in the event of accidental contact with liquids, on pop-ups with 4 and 8 modules.



# INCARA™ Multilink

A configuration  
for every situation



# Multilink

**ncara Multilink is a totally modular solution for distributing power and data, flush-mounted in the furniture or partitions.**

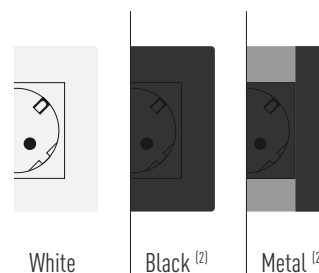
## SIMPLICITY OF INSTALLATION AND USE

Horizontal installation in furniture (min. flush-mounting depth 80 mm) or vertical installation in partitions (min. flush-mounting depth 50 mm).

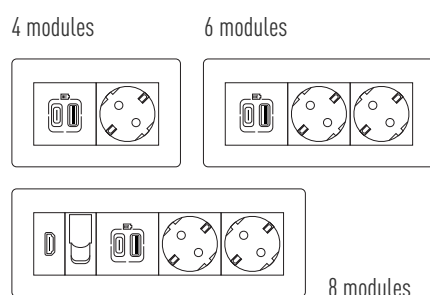
## AVAILABLE FINISHES

Metal, white and black for the horizontal version and white only for the vertical version.

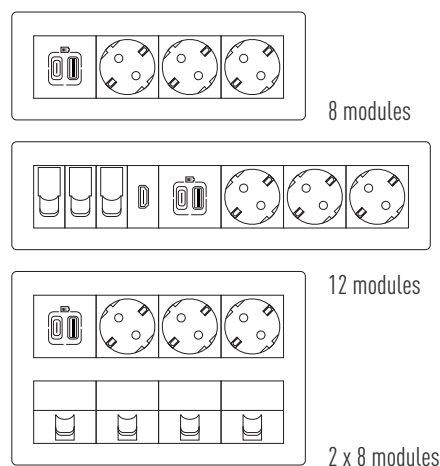
## TIMELESS FINISHES



### VERSION FOR FURNITURE <sup>(1)</sup>



### VERSION FOR PARTITIONS <sup>(1)</sup>



## 200 FULLY MODULAR MOSAIC FUNCTIONS

### Version for furniture

- **As standard:** products available in 4, 6 and 8-module versions pre-equipped with 2P+E power sockets and/or RJ 45 socket, USB A+C charger, HDMI socket.
- **Preconfigured:** option of choosing the length (up to 28 modules) and functions. Can take a number of functions available in the Mosaic range.

### Version for partitions

- **As standard:** products available in 8, 12 and 2 x 8-module versions pre-equipped with 2P+E power sockets and/or RJ 45 socket, USB A+C charger, HDMI socket.

## KNOW MORE

The vertical version and its reduced flush-mounting depth offers superb flexibility during installation.



(1) 1 socket = 2 modules

(2) Finishes only available in "For furniture" version.



INCARA™

# Flip-up

The premium solution  
for meeting rooms





# Flip-up

**Incara Flip-up is the premium solution for meeting rooms with its elegant and crisp appearance.**

Sockets fit discreetly under its cover, even with your devices plugged in.

### EXCELLENT STRENGTH AND EASE OF USE

With its simple push-to-open mechanism, the cover slides inside the product and the socket unit rises up (patented Legrand system). Access to the sockets is on both sides, making it an ideal solution for meeting rooms.



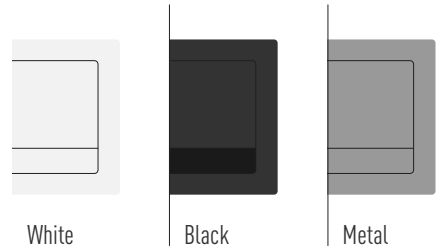
### 100% METAL FINISH

Metal cover, frame and cable gland plate for a sleek design which blends in harmoniously and creates a unique result.

Other finishes and equipment are available in a preconfigured version.

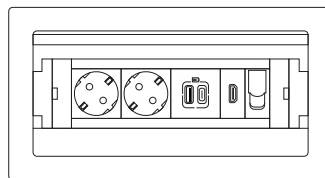
### COLOURS

Available on request (selection possible in the pCon software).

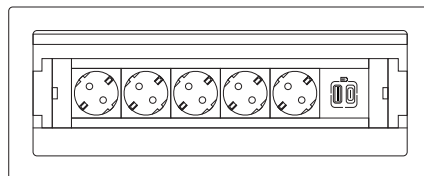


(1) 1 socket = 2 modules

The retractable system has been tested up to 18,000 operations. Incara Flip-up is available in 8 or 12 modules<sup>(1)</sup>.



8 modules



12 modules

### KNOW MORE

The quick-fixing system saves a great deal of installation time (Legrand patented system). No tools required.



INCARA™

# Top Access

The essential solution  
for meeting rooms



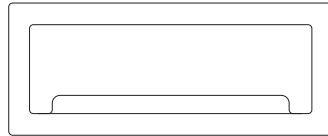
# Top Access

Incara Top Access enables discreet, easy storage for multi-outlet blocks and can also accommodate chargers and wires.

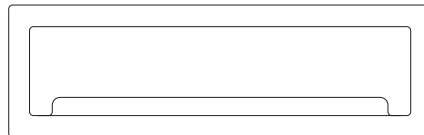
## SIMPLICITY OF USE

With its integral basket, Incara Top Access can accommodate and conceal all electrification solutions. To ensure soft closing, the cover is fitted with a damper.

Available in 2 sizes:



295 mm wide

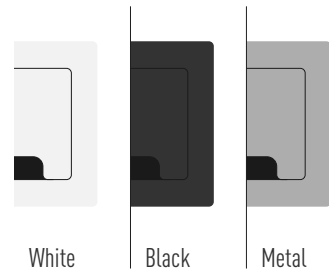


385 mm wide

## AVAILABLE FINISHES

A choice of three finishes for seamless integration in workspaces.

## TIMELESS FINISHES



## KNOW MORE

Top Access is equipped with a fixing rail on which Legrand office modules can be locked.





INCARA™

# Tower 60

Convenient  
and compact





# Tower 60

**M**anual opening retractable system, perfect for easy power and data distribution for occasional use in confined spaces.

## SIMPLICITY OF INSTALLATION AND USE

Incara Tower 60 is easily integrated into any environment.

Very compact, it is installed in furniture or a work surface (80 mm Ø cut-out). Once open, the Tower 60 allows you to access several power sockets, a USB A+C charger and/or RJ 45 Cat. 6 UTP sockets (depending on the version) only when you need it.

Supplied with cord and 2P+E plug to connect it to a power socket.



The retractable system has been tested up to 30,000 operations.





INCARA™

# Tower 120

360° accessibility

# Tower 120

**E**legant, easy to install and use, Incara Tower 120 is also exceptionally ergonomic, offering 360° access to sockets.

## SIMPLICITY OF INSTALLATION AND USE

The compact Incara Tower 120 is perfect for use in meeting tables, especially round tables (121 mm Ø cut-out). It has an automatic push-to-open mechanism and provides access to every side, a power socket and a USB A+C charger. Supplied with cord and 2P+E plug.



## KNOW MORE

The Tower 120 is also available in a version with a wireless charger equipped with an illuminated ring (charging indicator).





INCARA™

# Electr'On

Unique design for  
unique environments



reddot winner 2022



# Electr'On

**W**ith its multiple finishes and accessories, Incara Electr'On will always be perfect for use in an office or workspace.

### FITTED AND READY TO USE

Available in a 1-gang version, equipped with a power socket or a USB A+C charger, or a 2-gang version with two power sockets or one power socket and a USB A+C charger.



### ELEGANCE AND ORIGINALITY

Incara Electr'On will surprise you with its original design and its high-quality materials such as wood and concrete, as well as the vintage style, fabric braided cable and Legrand signature label. The finishes can be easily changed over time as desired (Legrand patented system).

#### MATERIALS



Oak



Concrete



White



Black

#### TIMELESS FINISHES

#### COLOURS

Available on request (selection possible in the pCon software).

pCon



Silk blue



Ginger orange



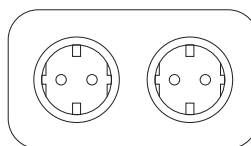
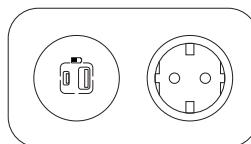
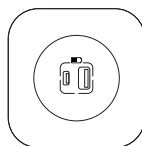
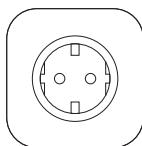
Rose



Leaf green

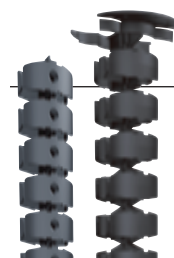
### KNOW MORE

Incara Electr'On can simply be fitted horizontally on the work surface or at an angle using the fixing accessory, for easier access to sockets.



DISCOVER OUR SOLUTIONS FOR OPTIMISING FLEXIBLE CABLE MANAGEMENT.

> Go to page 53



INCARA™

# On Desk

Flexibility and  
convenience



# On Desk

**W**ith its modern design and optimised dimensions, Incara On Desk can adapt to any furniture configuration and is easily installed on or under desks to carry power as close to the user as possible without having to drill through the furniture.

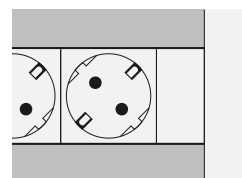
## COMPACT AND STYLISH

Incara On Desk combines ergonomics, a modern design and optimised dimensions for discreet integration. Its angled design makes it much easier to access the sockets.



## AVAILABLE FINISHES

Seamless integration in modern offices: aluminium body and white sockets.



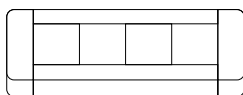
## KNOW MORE

With the flexibility of customisable solutions, On Desk can be equipped with sockets of different standards or innovative functions such as the USB charger or reading light.

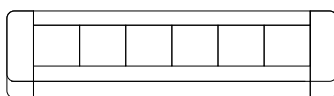


## A VARIETY OF FUNCTIONS

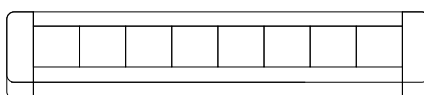
Blocks are available in either equipped or to be equipped versions. Mix of power and data functions (available in different industry standards). To be equipped version, available in 8, 12 or 16 modules <sup>(1)</sup>.



8 modules



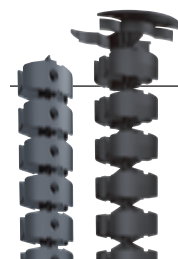
12 modules



16 modules

## DISCOVER OUR SOLUTIONS FOR OPTIMISING FLEXIBLE CABLE MANAGEMENT.

> Go to page 53



(1) 1 socket = 2 modules

INCARA™

# Link'On

Mobile and scalable





# Link'On

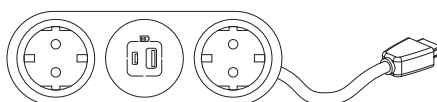
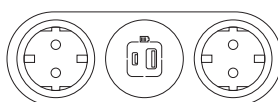
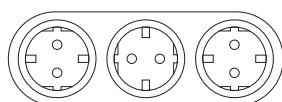
Incara Link'On, the compact, ready-to-use, mobile solution which can supply up to 6 users with power directly on the meeting table.

## SIMPLICITY OF INSTALLATION AND USE

Incara Link'On is a unique installation solution, ideally suited to the specific connection needs of mobile users in meeting rooms.

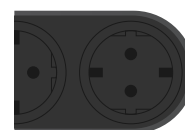
Available in several versions:

- 6 x 2P+E sockets
- 4 x 2P+E sockets and 2 USB A+C chargers, with or without an integral HDMI cable



## AVAILABLE FINISH

Intense and sophisticated, black has many advantages. Black is seen as timeless, and goes with every colour. All Link'Ons are equipped with a matching cord with a braided fabric finish.



Black



## KNOW MORE

Incara Link'On units equipped with 2P+E sockets and USB A+C chargers can be joined to other Link'On extension units (1 primary + 1 secondary) to provide access to more users or adapt to the room configuration. The extension units are equipped with a 1.5 m cord with a Wieland connector.



# Clip-on multi-outlet

Power your devices and keep  
your workspace clutter-free



# Home office

The clip-on multi-outlet allows you to plug in devices that are plugged in permanently and charge mobile devices without cluttering up your surfaces.

## SIMPLICITY OF INSTALLATION AND USE

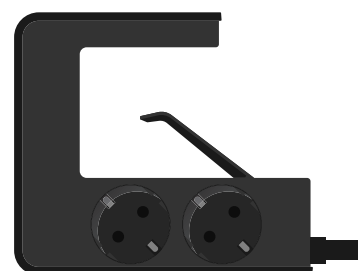
The clip-on multi-outlet is stylish and discreet, allowing you to plug in up to four 2P+E devices and two USB Type-A mobile devices.

Thanks to its clip-on system, it is suitable for desk surfaces up to 63 mm thick.

## AVAILABLE FINISH

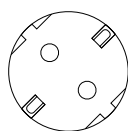
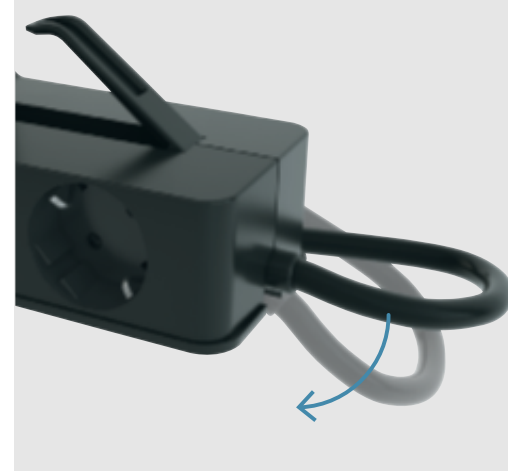
Intense and sophisticated, black has many advantages. Black is seen as timeless, and goes with every colour.

PAGES 42/43



## KNOW MORE

The clip-on multi-outlet has a power cord that can rotate 90° to adapt to any configuration.



4 x 2P+E sockets



2 x USB Type-A ports

# Multi-outlet charging station

Compact and practical with wireless charger





# Home office

**C**harge your smartphone efficiently either on the wireless charging station or using the USB Type-A and Type-C sockets.

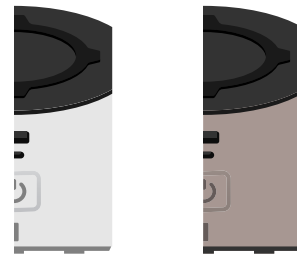
## SIMPLICITY OF INSTALLATION AND USE

An ideal solution for the home or office. Place your smartphone on the non-slip angled surface and keep an eye on your messages while your smartphone charges wirelessly and securely.



## AVAILABLE FINISHES

The charging station comes in two finishes to blend in seamlessly in your home or work environment.

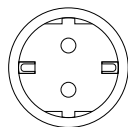


White/Dark grey

Taupe/Dark grey

## KNOW MORE

Three kinds of charging capability are offered to extend connections and charge mobile devices which are not connected permanently.



2 x 2P+E sockets



USB A+C charger



10W wireless charging pad



# Multi-outlet with tablet stand

Dual-purpose extension



# Home office

**T**he multi-outlet extension with tablet stand allows you to plug in all your electrical equipment and mobile devices while providing an ergonomic stand for your tablet or smartphone.

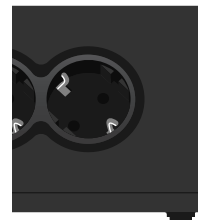
## SIMPLICITY OF INSTALLATION AND USE

A cleverly-designed product that is ideal for your home office or kitchen. The multi-outlet extension with integrated tablet stand is the ideal companion for plugging in up to three 2P+E sockets and two USB Type-A sockets while having access to your tablet or smartphone.

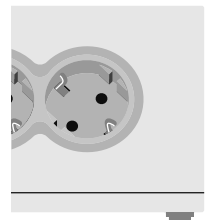


## AVAILABLE FINISHES

The multi-outlet extension with tablet stand is available in two finishes to blend in seamlessly in your home or work environment.



Black



White/Light grey

## KNOW MORE

The handy built-in stand has a non-slip surface to hold your tablet in place as it charges or as you scroll through a recipe.



## ENHANCED PROTECTION

The multi-outlet extension with tablet stand has an ON/OFF switch equipped with a 16 A circuit breaker to protect connected devices if consumption exceeds the maximum permissible power.



## Selection guide

### Incara™ Disq 60



FUNCTION	FINISH			
	White	Black	Metal	Black + cover
<b>With 2 m cord + 2P+E plug</b>				
1 x 2P+E socket	6 547 25	6 547 26	6 547 27	6 547 28
1 x 15 W USB A+C charger	6 547 30	6 547 31	6 547 32	6 547 33
<b>With 0.5 m cord + Wieland connector</b>				
1 x 2P+E socket	6 547 25F	6 547 26F	6 547 27F	6 547 28F
1 x 15 W USB A+C charger	6 547 30F	6 547 31F	6 547 32F	6 547 33F

### Incara™ Disq 80



FUNCTION	FINISH			
	White	Black	Metal	Black + cover
<b>With 2 m cord + 2P+E plug</b>				
1 x 2P+E socket + 1 USB A+C charger + 1 x RJ 45 Cat. 6 UTP	6 547 10	6 547 11	6 547 12	6 547 13
1 x 2P+E socket + 1 USB A+C charger + 1 x cable outlet	6 547 14	6 547 15	6 547 16	-
<b>With 0.5 m cord + Wieland connector</b>				
1 x 2P+E socket + 1 USB A+C charger + 1 x RJ 45 Cat. 6 UTP socket	6 547 10F	6 547 11F	6 547 12F	6 547 13F
1 x 2P+E socket + 1 USB A+C charger + 1 x cable outlet	6 547 14F	6 547 15F	6 547 16F	-

### Incara™ Disq 80 QI



FUNCTION	POWER RATING	POWER SUPPLY	FINISH		
			White	Black	Aluminium
Kit with 1 charger	15 W	Supplied: 110 – 240 W 25 W with EU 2P plug	-	-	0 776 40L
Kit of 4 chargers	15 W	Supplied: 110 – 240 W 100 W to be wired	-	-	0 776 45L
		Supplied: 110 – 240 W 100 W with 2.5 m cord and EU 2P plug	-	-	0 776 46L
Charger for customer assembly	15 W	To be ordered separately: For 1 charger: 25 W: 0 776 38L For 4 chargers: 100 W: 0 776 39L	0 776 42L	0 776 43L	0 776 41L

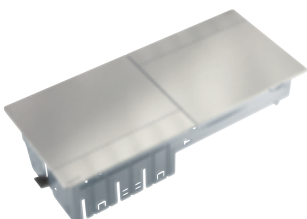
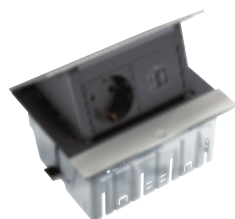


## Incara™ Disq'In



CAPACITY	FUNCTION	SOCKET FINISH	CAT.NO	FINISHING PLATES		
				White	Black	Metal
2-gang	1 x 2P+E socket + 1 x USB A+C charger	White	6 547 46	6 547 56	6 547 57	6 547 55
		Black	6 547 49			
3-gang	2 x 2P+E sockets + 1 x USB A+C charger	White	6 547 47	6 547 60	6 547 61	6 547 59
		Black	6 547 50			
4-gang	2 x 2P+E sockets + 1 x USB A+C charger + 1 x HDMI socket	White	6 547 48	6 547 64	6 547 65	6 547 63
		Black	6 547 51			

## Incara™ Pop Up



CAPACITY	FUNCTION	FINISH			
		White	Black	Aluminium	Brushed Aluminium
<b>Ready-equipped version - products supplied with 2 m cord + 2P+E plug</b>					
4 modules	1 x 2P+E socket + 1 x 15 W USB A+C charger	6 548 23	-	-	6 548 22
	1 x 2P+E socket + 1 x 30 W USB C Power Delivery charger	-	-	-	6 548 28
	1 x 2P+E socket + 1 x 15 W USB A+C charger + 1 x wireless power charger	-	-	-	6 548 26*
2 x 4 modules	2 x 2P+E sockets + 2 x 15 W USB A+C chargers	6 548 25*	-	-	6 548 24*
<b>To be equipped version</b>					
4 modules		6 548 01	6 548 02	6 548 03	6 548 00
4 modules + wireless power charger		-	-	-	6 548 14*
4 x IP 44 modules		-	-	-	6 548 12*
8 modules		6 548 09	6 548 10	6 548 11	6 548 08*
2 x 4 modules		6 548 05*	6 548 06*	6 548 07*	6 548 04*

\* Products available from January 2023

## Selection guide

### Incara™ Multilink



CAPACITY	FUNCTION	FINISH		
		White	Black	Metal
<b>Horizontal version</b>				
4 modules	1 x 2P+E socket + 1 x 15 W USB A+C charger	6 547 79	6 547 85	6 547 89
	2 x 2P+E sockets + 1 x 15 W USB A+C charger	6 547 80	6 547 86	6 547 90
6 modules	2 x 2P+E sockets + 1 x 30 W USB C Power Delivery charger	-	-	6 547 93
	8 modules	2 x 2P+E sockets + 1 x 15 W USB A+C charger + 1 x RJ 45 Cat. 6 UTP socket + 1 x HDMI socket	6 547 81	6 547 87
<b>Vertical version</b>				
8 modules	3 x 2P+E sockets + 1 x 15 W USB A+C charger	6 548 62	-	-
12 modules	3 x 2P+E sockets + 1 x 15 W USB A+C charger + 3 x RJ 45 Cat. 6 UTP sockets + 1 x HDMI socket	6 548 63	-	-
16 modules (2 x 8)	3 x 2P+E sockets + 1 x 15 W USB A+C charger + 4 x RJ 45 Cat. 6 UTP sockets	6 548 65	-	-

Products equipped with 2 m cord + 2P+E plug

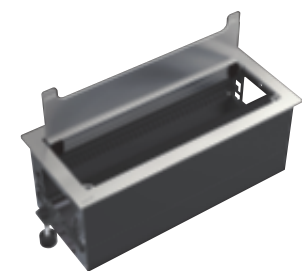
### Incara™ Flip-up



CAPACITY	FUNCTION	FINISH
		Metal
8 modules	3 x 2P+E sockets + 1 x 15 W USB A+C charger	6 548 54
	2 x 2P+E sockets + 1 x 15 W USB A+C charger + 1 x RJ 45 Cat. 6 UTP socket + 1 x HDMI socket	6 548 55
	5 x 2P+E sockets + 1 x 15 W USB A+C charger	6 548 56
12 modules	3 x 2P+E sockets + 1 x 15 W USB A+C charger + 3 x RJ 45 Cat. 6 UTP sockets + 1 x HDMI socket	6 548 57

Products equipped with 2 m cord + 2P+E plug

### Incara™ Top Access (to be equipped with an office module or multi-outlet block)



WIDTH	FINISH		
	White	Black	Metal
295 mm	6 548 71	6 548 72	6 548 70
385 mm	6 548 74	6 548 75	6 548 73

## Incara™ Tower 60



FUNCTIONS	CAT.NO
4 x 2P+E sockets	6 549 76
4 x 2P+E sockets + 2 x RJ 45 Cat. 6 UTP sockets	6 549 77
3 x 2P+E sockets + 1 x USB A+C charger	6 549 74
3 x 2P+E sockets + 1 x USB A+C charger + 2 x RJ 45 Cat. 6 UTP sockets	6 549 75

Products equipped with 2 m cord + 2P+E plug

## Incara™ Tower 120



FUNCTIONS	CAT.NO
4 x 2P+E sockets + 2 x USB A chargers + 2 x USB C chargers	6 549 82
4 x 2P+E sockets + 2 x USB A chargers + 2 x USB C chargers + 1 x wireless charger	6 549 83

Products equipped with 2 m cord + 2P+E plug

## Selection guide

### Incara™ Electr'On

FUNCTION	FINISH	CAT.NO	TRIM			
			White	Black	Oak	Concrete
<b>"For customer assembly" version</b>						
1 x 2P+E socket	White	6 549 06	6 549 32	6 549 33	6 549 31	6 549 30
	Black	6 549 07				
1 x USB A+C charger	White	6 549 18	6 549 32	6 549 33	6 549 31	6 549 30
	Black	6 549 20				
2 x 2P+E sockets	White	6 549 10	6 549 36	6 549 37	6 549 35	6 549 34
	Black	6 549 11				
1 x 2P+E socket + 1 x USB A+C charger	White	6 549 08	6 549 36	6 549 37	6 549 35	6 549 34
	Black	6 549 09				
<b>Supplied in a kit</b>						
1 x USB A+C charger	White	6 549 22	White trim supplied in the kit			
	Black	6 549 23	Black trim supplied in the kit			
Fixing bracket	Black	6 549 38	Compatible with all Electr'On Cat.Nos			

Products equipped with 2.5 m cord + 2P+E plug

### Incara™ On Desk

FUNCTION	CAT.NO
<b>Ready-to-use version (products equipped with 3 m cord + 2P+E plug)</b>	
4 x 2P+E sockets + 1 illuminated switch	6 535 65
6 x 2P+E sockets + 1 illuminated switch	6 535 66
3 x 2P+E sockets + 1 x 15 W USB A+C charger	6 535 67
2 x 2P+E sockets + 2 x tamperproof 2P+E sockets + 2 x RJ 45 Cat. 6 UTP sockets	6 535 68
<b>To be equipped version</b>	
Capacity: 8 modules	0 546 90
Capacity: 12 modules	0 546 91
Capacity: 16 modules	0 546 92
Fixing accessory	0 546 99

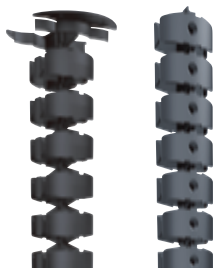


## Incara™ Link'On



FUNCTION	JOINABLE	FINISH	
		Black	
<b>With fabric finish 2.5 m cord + 2P+E plug</b>			
6 x 2P+E socket	No	6 548 86	
4 x 2P+E sockets + 2 x USB A+C charger	Yes, integral Wieland connector compatible with extension Cat.No 6 548 89	6 548 88	
4 x 2P+E sockets + 2 x USB A+C chargers Integral 2 m HDMI cable	Yes, integral Wieland connector compatible with extension Cat.No 6 548 89	6 548 87	
<b>With 1.5 m cord equipped with a Wieland connector</b>			
4 x 2P+E sockets + 2 x USB A+C charger	Yes with Cat.Nos 6 548 87/88	6 548 89	

## Incara™ Vertebra



NO. OF COMPARTMENTS	LENGTH	INSTALLATION	FINISH	
			Grey	Black
2	120 cm	Horizontally or vertically	6 549 92	6 549 93
4	80 cm	Vertically	6 549 90	6 549 91

## Wieland accessories

FUNCTION	LENGTH	CAT.NO
Wieland GST18 cable/2P+E socket	2 m	6 549 86
Wieland GST18 cable/2P+E socket	3 m	6 549 87
Protective box for Wieland GST18 connectors	80 cm	6 547 99

# Incara™ Disq 60

for offices and collaborative spaces



6 547 27F



6 547 25F



6 547 28



6 547 28 with cover open



6 547 32



6 547 30



6 547 31

**Technical characteristics p. 57**

For flush mounting in furniture in Ø60 mm cut-out

Three methods of installation:

- Flush mounting in the furniture (desk), 6-40 mm thickness
- Flush mounting on a soft surface (armchair, sofa) using a dedicated accessory
- Flush mounting on a metal panel, 1 mm thickness (locker)

Pack	Cat.No	2P+E flush sockets
		16 A 250 V~ 50/60 Hz Sockets specially designed for passageways (30,000 operations) and equipped with safety shutters Conform to standard IEC 60881-1 <b>With 0.5 m cord and GST18i3 Wieland connector</b>
1	6 547 27F	● Metal finish
1	6 547 25F	○ White finish
1	6 547 26F	● Black finish
		<b>With 2 m cord and 2P+E plug</b>
1	6 547 27	● Metal finish
1	6 547 25	○ White finish
1	6 547 26	● Black finish
		<b>2P+E flush sockets with metal cover</b>
		16 A 250 V~ 50/60 Hz Sockets specially designed for passageways (30,000 operations), equipped with safety shutters Conform to standard IEC 60881-1 Swivel cover For protection and a neat and stylish appearance <b>With 0.5 m cord and GST18i3 Wieland connector</b>
1	6 547 28F	● Metal cover
		<b>With 2 m cord and 2P+E plug</b>
1	6 547 28	● Metal cover
		<b>15 W USB Type-A + Type-C chargers</b>
		Power supply: 110-240 V~ 50/60 Hz Conform to standard IEC 62368-1 <b>With 0.5 m cord and GST18i3 Wieland connector</b>
1	6 547 32F	● Metal finish
1	6 547 30F	○ White finish
1	6 547 31F	● Black finish
		<b>With 2 m cord and 2P+E plug</b>
1	6 547 32	● Metal finish
1	6 547 30	○ White finish
1	6 547 31	● Black finish

Pack	Cat.No	15 W USB Type-A + Type-C chargers with cover
		Power supply: 110-240 V~ 50/60 Hz Conform to standard IEC 62368-1 Swivel cover for protection and a neat and stylish appearance <b>With 0.5 m cord and GST18i3 Wieland connector</b>
1	6 547 33F	● Metal cover
		<b>With 2 m cord and 2P+E plug</b>
1	6 547 33	● Metal cover
		<b>Accessory for installing in a soft surface</b>
15	6 547 39	For strengthening the fabric cover to provide stability for the product
		<b>Wieland accessories</b>
		<b>Combined Wieland GST18i3 connector/2P+E plug cord</b>
1	6 549 86	Length 2 m
1	6 549 87	Length 3 m
		<b>Protective casing</b>
1	6 547 99	For Wieland GST18i3 connectors

**Other configurations, socket standards and finishes** available on request or via the pCon software



# Incara™ Disq 80

for offices and collaborative spaces



Technical characteristics p. 57

For flush mounting in furniture, 1-40 mm thickness, in Ø79 mm cut-out  
 RJ 45 socket: feedthrough socket  
 2P+E sockets conforming to standard IEC 60881-1  
 USB chargers conforming to standard IEC 62368-1

Pack	Cat.No	2P+E flush socket + 15 W USB Type-A + Type-C charger + RJ 45 cat. 6 UTP socket
		2P+E sockets: 16 A 250 V~ 50/60 Hz USB chargers: 110/240 V~ 50/60 Hz power supply Sockets specially designed for passageways (30,000 operations), equipped with safety shutters
		<b>With 0.5 m cord and GST18i3 Wieland connector</b>
1	6 547 12F	● Metal finish
1	6 547 10F	○ White finish
1	6 547 11F	● Black finish
		<b>With 2 m cord and 2P+E plug</b>
1	6 547 12	● Metal finish
1	6 547 10	○ White finish
1	6 547 11	● Black finish

Pack	Cat.No	2P+E flush socket + 15 W USB Type-A + Type-C charger + RJ 45 cat. 6 UTP socket with cover
		2P+E sockets: 16 A 250 V~ 50/60 Hz USB chargers: 110/240 V~ 50/60 Hz power supply Sockets specially designed for passageways (30,000 operations) and equipped with safety shutters Swivel cover for protection and a neat and stylish appearance
		<b>With 0.5 m cord and GST18i3 Wieland connector</b>
1	6 547 13F	● Metal cover
		<b>With 2 m cord and 2P+E plug</b>
1	6 547 13	● Metal cover

Pack	Cat.No	2P+E flush socket + 15 W USB Type-A + Type-C charger + cable outlet
		2P+E sockets: 16 A 250 V~ 50/60 Hz USB chargers: 110/220 V~ 50/60 Hz power supply Sockets specially designed for passageways (30,000 operations), equipped with safety shutters
		<b>With 0.5 m cord and GST18i3 Wieland connector</b>
1	6 547 16F	● Metal finish
1	6 547 14F	○ White finish
1	6 547 15F	● Black finish
		<b>With 2 m cord and 2P+E plug</b>
1	6 547 16	● Metal finish
1	6 547 14	○ White finish
1	6 547 15	● Black finish

Pack	Cat.No	Wieland accessories
		<b>Combined Wieland GST18i3 connector/2P+E plug cord</b>
1	6 549 86	Length 2 m
1	6 549 87	Length 3 m
		<b>Protective casing</b>
1	6 547 99	For Wieland GST18i3 connectors

**Other configurations, socket standards and finishes** available on request or via the pCon software



# Incara™ Disq 80

for offices and collaborative spaces



Technical characteristics [online catalogue](#)

Wireless charger for fast charging a smartphone with a Qi receiver  
 Standby power consumption < 0.07W  
 Energy efficiency > 85%  
 Conforms to the WPC (Wireless Power Consortium) Qi standard  
 Conforms to standard EN 62479 (EMF emissions)  
 Conforms to ICNIRP specifications (health protection)  
 Does not interfere with other wireless signals (Zigbee, DTT, GSM, 4G, etc.)

Pack	Cat.No	Ready to install wireless charger
		Specially designed for mounting horizontally on furniture in passageways or transit areas, offices or kitchen surfaces, etc. IP44 - IK08 - Class II SELV Equipped with an 8 cm <sup>2</sup> induction antenna for fast smartphone charging 80 mm diameter cut-out using hole saw Cat.No 0 885 08, inlaid diameter 85 mm, extra-slim with thickness < 1.5 mm Charger locks under furniture with a butterfly nut WPC Qi certified Aluminium colour
1	0 776 40L	<b>Complete kit with 1 charger for furniture Ø80 (plug)</b> 1 x 15 W charger with 1 x 25 W power supply Power supply equipped with a 2.5 m cord 2P European plug (also available with plug conforming to US, BS, Australia or China standards; please consult us) Supplied with the following accessories: - 2.5 m RJ 45 cable - Adhesive bases and cable ties for attaching cables - Sticker Ø85-110 for identification purposes in public areas
1	0 776 45L	<b>Complete kit with 4 chargers for furniture Ø80 (cable)</b> 4 x 15 W chargers with 1 x 100 W power supply Power supply 2 x 2.5 mm <sup>2</sup> for cable connection Provides several power supplies on a single line Supplied with 4 x 1 m RJ 45 cables and associated accessories Charger wired in star or series connection Plug & Play
1	0 776 46L	<b>Complete kit with 4 chargers for furniture Ø80 (plug)</b> 4 x 15 W chargers with 1 x 100 W power supply Power supply equipped with a 2.5 m cord 2P European plug (also available with plug conforming to US, BS, Australia or China standards; please consult us) Supplied with 4 x 1 m RJ 45 cables and associated accessories Charger wired in star or series connection Plug & Play

Pack	Cat.No	Chargers for customer assembly
		15 W wireless chargers (IP44, IK08) Single unit with power supply Cat.No 0 776 38L Multiple units with power supply/supplies Cat.No 0 776 39L Option to print a custom logo
1	0 776 42L	○ White
1	0 776 43L	● Black
1	0 776 41L	● Aluminium
		<b>Movable power supplies for wireless chargers</b> 1 0 776 38L 25 W power supply with 2P plug and RJ 45 cable 1 0 776 39L 100 W power supply, 2 x 2.5 mm <sup>2</sup> , tap-off possible Supplied with 4 x 1 m RJ 45 cables Charger wired in star or series connection Plug & Play

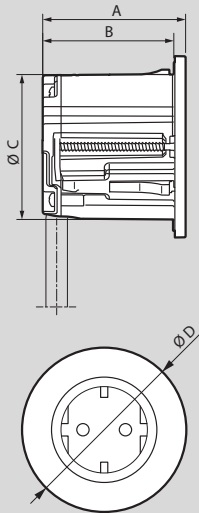


# Incara™ Disq 60

technical characteristics

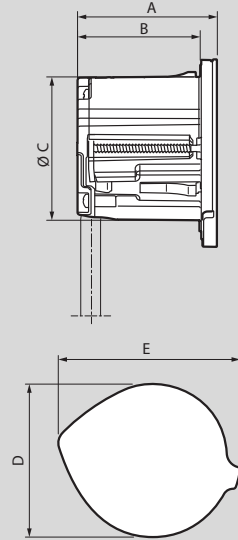
## ■ Dimensions (mm)

**Incara™ Disq 60 without cover**  
Cat.Nos 6 547 25/25F/26/26F/27/27F/30/30F/31/31F/32/32F



A	B	C	D
54.5	50	59	74

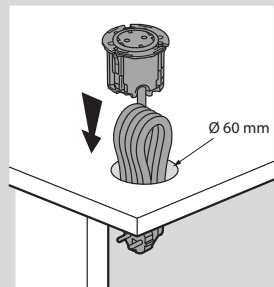
**Incara™ Disq 60 with cover**  
Cat.Nos 6 547 28/28F/33/33F



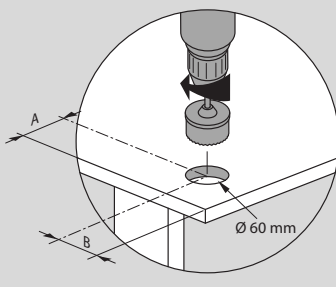
A	B	C	D	E
57	50	59	77	91

## ■ Positioning

Installing in office furniture

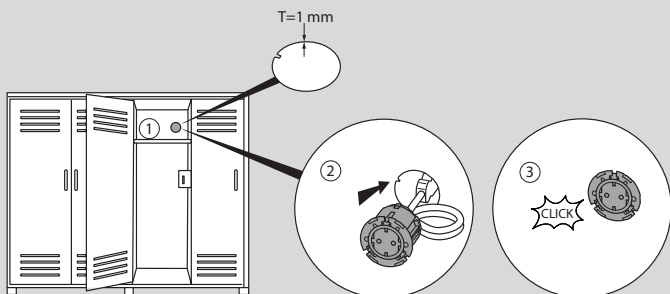


Drilling dimensions

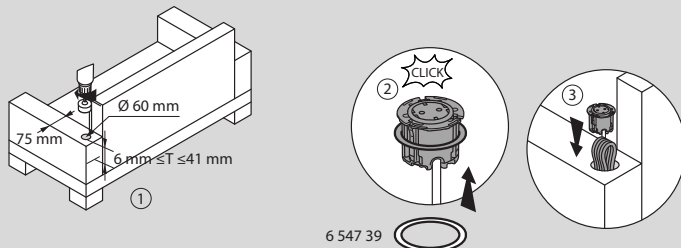


	A > 95	B > 95
	A > 125	B > 95

Installing in metal furniture such as a locker



Installing in a sofa

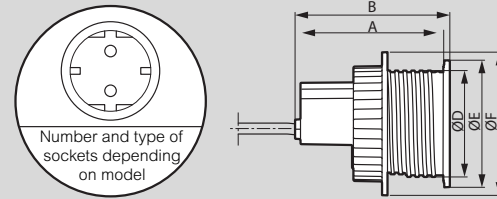


6 547 39

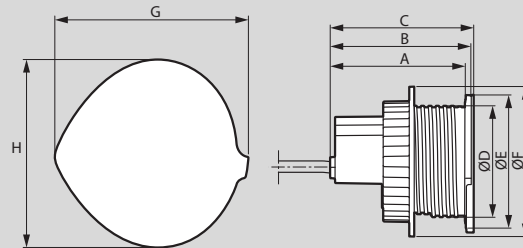
# Incara™ Disq 80

technical characteristics

## ■ Dimensions (mm)



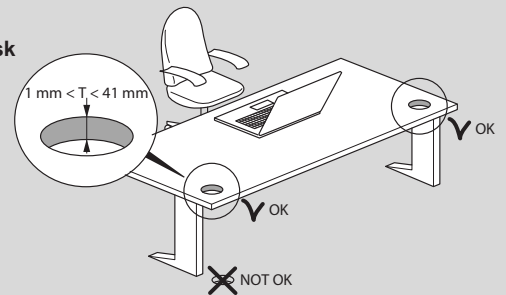
Cat.Nos	A	B	C	D	E	F
6 547 10/10F/11/11F/12/12F	109	113	-	78	93	105
6 547 14/14F/15/15F/16/16F			115			



Cat.Nos	A	B	C	D	E	F	G	H	
6 547 13/13F	109	113	116	78	93	105	105	114	96

## ■ Positioning

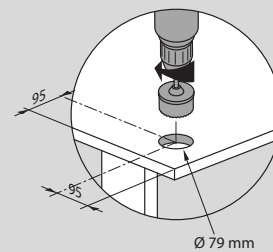
Installing in a desk



## ■ Drilling dimensions

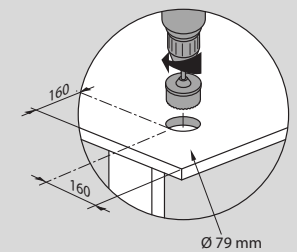
**Incara™ Disq 80 without cover**

Cat.Nos 6 547 10/10F/11/11F/12/12F/14/14F/15/15F/16/16F

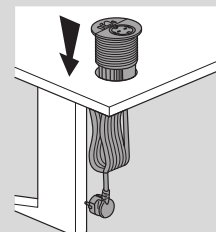


**Incara™ Disq 80 with cover**

Cat.Nos 6 547 13/13F

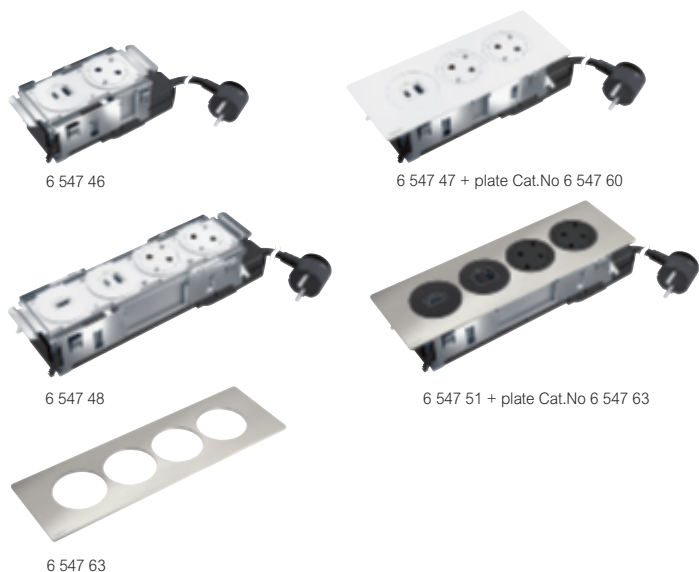


## ■ Insertion



## Incara™ Disq'In

for offices and meeting rooms



Technical characteristics p. 59

For flush mounting in furniture, compatible desktop thickness 15 to 40 mm  
Dimensions optimised by remote terminal blocks  
2 m cord with 2P+E plug  
HDMI sockets: feedthrough sockets  
Snap-on fixing via retractable clamps

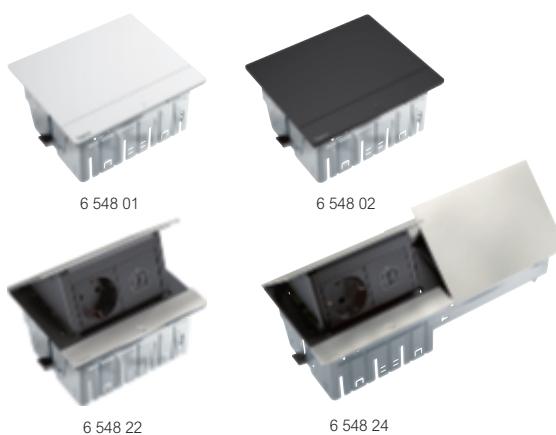
Pack	Cat.No	Incara™ Disq'In
1	6 547 46	2P+E sockets 16 A 250 V~ equipped with safety shutters, conforming to standard IEC 60881-1 USB chargers: 110/240 V~ 50/60 Hz power supply, conforming to standard IEC 62368-1 With 2 m cord and 2P+E plug Finishing plate to be ordered separately
1	6 547 49	
		<b>2-gang</b> Composition: - 1 x 2P+E flush socket - 1 x 15 W USB Type-A + Type-C charger ○ White wiring accessories ● Black wiring accessories
1	6 547 47	<b>3-gang</b> Composition: - 2 x 2P+E flush sockets - 1 x 15 W USB Type-A + Type-C charger ○ White wiring accessories ● Black wiring accessories
1	6 547 50	
		<b>4-gang</b> Composition: - 2 x 2P+E flush sockets - 1 x HDMI socket - 1 x 15 W USB Type-A + Type-C charger ○ White wiring accessories ● Black wiring accessories
1	6 547 48	
1	6 547 51	

### Incara™ Disq'In finishing plates

Pack	Cat.No	Incara™ Disq'In finishing plates
1	6 547 55	Metal <b>2-gang</b> ○ Metal ○ White ● Black
1	6 547 56	
1	6 547 57	
1	6 547 59	<b>3-gang</b> ○ Metal ○ White ● Black
1	6 547 60	
1	6 547 61	
1	6 547 63	<b>4-gang</b> ○ Metal ○ White ● Black
1	6 547 64	
1	6 547 65	

## Incara™ Pop-up

for offices and meeting rooms



Technical characteristics p. 60

For flush mounting in furniture, compatible desktop thickness 15 to 40 mm  
Metal. Protective film

Pack	Cat.No	Incara™ Pop-up to be equipped
		To be equipped with Mosaic functions
		<b>4 modules</b>
1	6 548 00	○ Brushed Aluminium
1	6 548 01	○ White
1	6 548 02	● Black
1	6 548 03	○ Aluminium
		<b>2023</b>
1	6 548 12	○ Brushed Aluminium (IP44)
1	6 548 14	○ Brushed Aluminium with wireless charger Blue LED to indicate product is operating correctly
		<b>2023</b>
		<b>2 x 4 modules</b>
1	6 548 04	○ Brushed Aluminium
1	6 548 05	○ White
1	6 548 06	● Black
1	6 548 07	○ Aluminium
		<b>8 modules</b>
1	6 548 08	○ Brushed Aluminium
1	6 548 09	○ White
1	6 548 10	● Black
1	6 548 11	○ Aluminium
		<b>Incara™ Pop-up pre-equipped</b>
		2P+E sockets 16 A 250 V~ equipped with safety shutters, conforming to standard IEC 60881-1 USB chargers: 110/240 V~ 50/60 Hz power supply, conforming to standard IEC 62368-1 With 2 m cord and 2P+E plug
		<b>4 modules</b>
1	6 548 28	Composition: 1 x 2P+E socket + 1 x USB Type-C 30 W Power Delivery charger ○ Brushed Aluminium
1	6 548 22	Composition: 1 x 2P+E flush socket + 1 x 15 W USB Type-A + Type-C charger ○ Brushed Aluminium
1	6 548 23	Composition: 1 x 2P+E flush socket + 1 x 15 W USB Type-A + Type-C charger ○ White
		<b>2023</b>
1	6 548 26	Composition: 1 x 2P+E flush socket + 1 x 15 W USB Type-A + Type-C charger + 1 wireless charger Blue LED to indicate product is operating correctly ○ Brushed Aluminium
		<b>2 x 4 modules</b>
		Composition: 2 x 2P+E flush sockets + 2 x 15 W USB Type-A + Type-C chargers
		<b>2023</b>
1	6 548 24	○ Brushed Aluminium
1	6 548 25	○ White

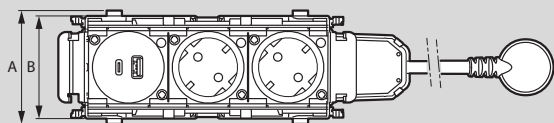
Other configurations, socket standards and finishes available on request or via the pCon software

# Incara™ Disq'In

## technical characteristics

### ■ Dimensions (mm)

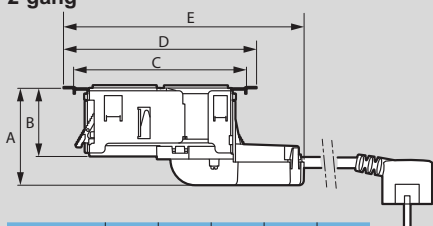
#### View from above



Cat.Nos	A	B
6 547 46/47/48/49/50/51	74	67

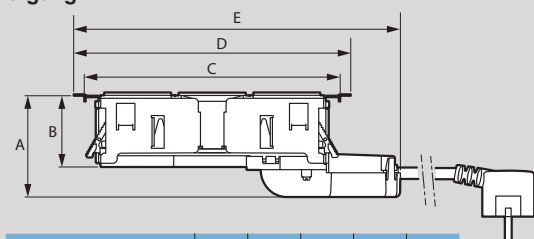
#### Side views

##### 2-gang



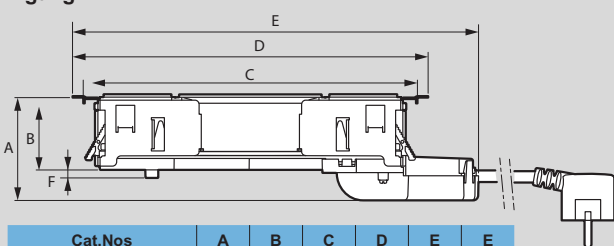
Cat.Nos	A	B	C	D	E
6 547 46/49	71	50	126.8	141.6	176.4

##### 3-gang



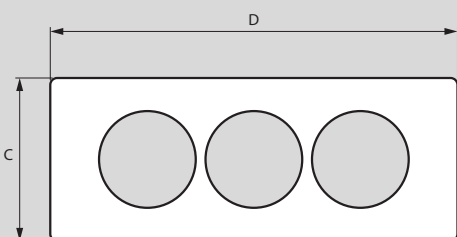
Cat.Nos	A	B	C	D	E
6 547 47/50	71	50	179.7	194.5	229.4

##### 4-gang



Cat.Nos	A	B	C	D	E	F
6 547 48/51	71	50	231	245.8	280.6	55

#### View from above - finishing plates



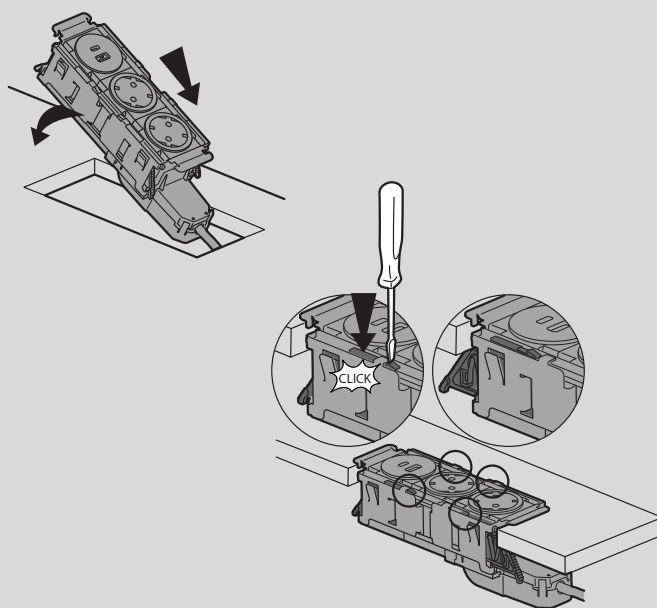
Cat.Nos	C	D
6 547 55/56/57		148
6 547 59/60/61	80	200
6 547 63/64/65		252

### ■ Dimensions (mm) (continued)

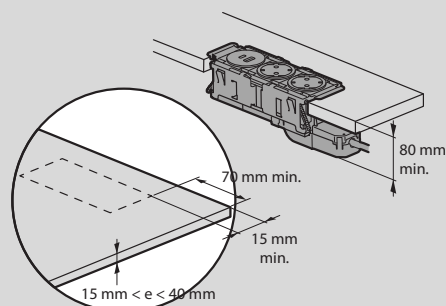


Cat.Nos	A	B
6 547 55/56/57	10.4	2.2
6 547 59/60/61		
6 547 63/64/65		

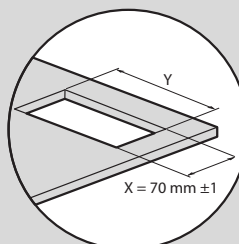
### ■ Positioning



### ■ Drilling dimensions



### ■ Cut-out for corners



Cat.Nos	Y ± 1 mm
6 547 46/49	129.5
6 547 47/50	181.5
6 547 48/51	233.5

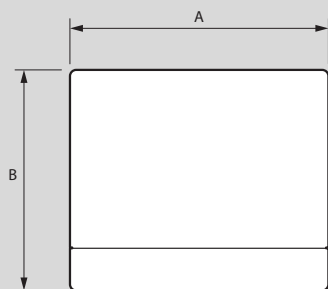
**Note:** For other cut-outs: see the product data sheet available online

# Incara™ Pop-up

## technical characteristics

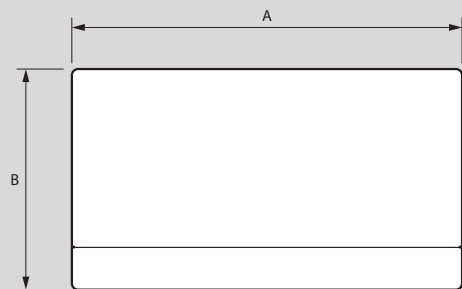
### ■ Dimensions

4 modules



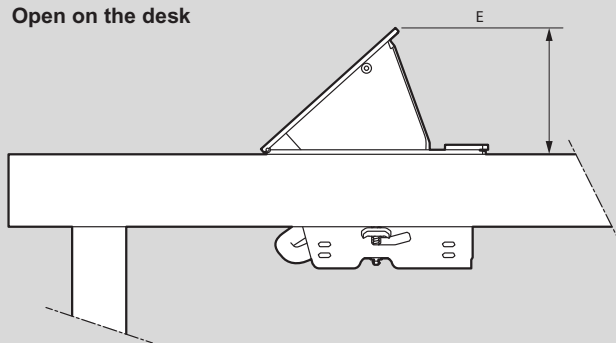
Cat.Nos	A	B
6 548 00/01/02/03/22/23/28	146	125

8 modules



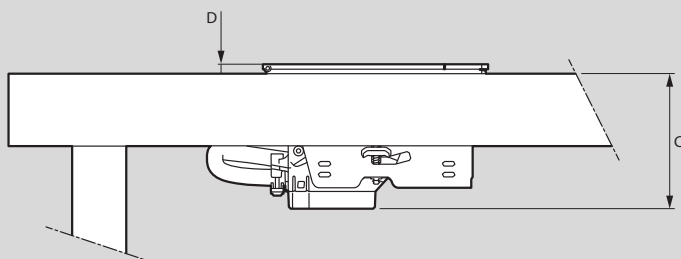
Cat.Nos	A	B
6 548 08/09/10/11	236	125

Open on the desk



Cat.Nos	E
6 548 00/01/02/03/08/09/10/11/22/23/28	70

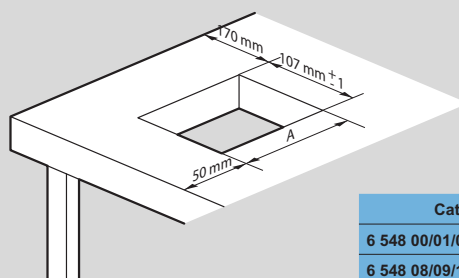
Closed on the desk



Cat.Nos	C	D
6 548 00/01/02/03/08/09/10/11/22/23/28	75	5.2

### ■ Drilling dimensions

Cut-out for corners

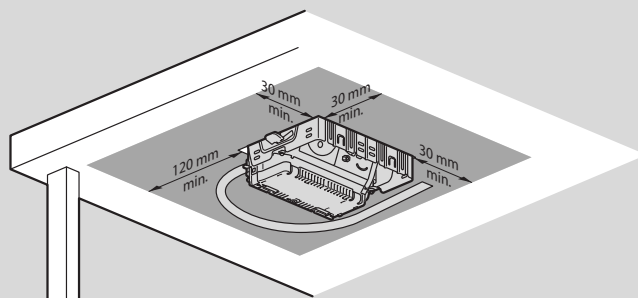


Cat.Nos	A
6 548 00/01/02/03/22/23/28	129 mm ± 1
6 548 08/09/10/11	219 mm ± 1

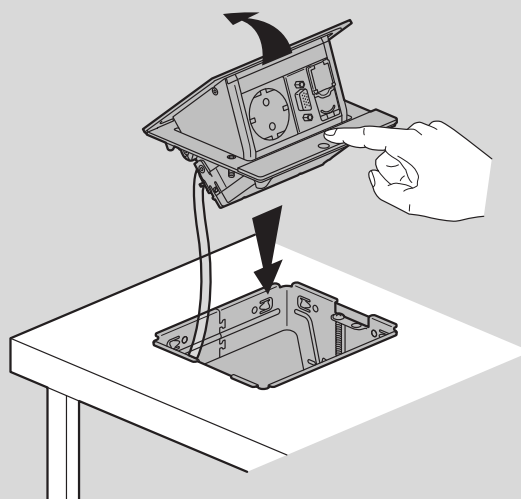


**Note:** For other cut-outs: see the product data sheet available online

### ■ Dimensions on the underside of the desk



### ■ Insertion





## Incara™ Multilink

for offices and meeting rooms



Technical characteristics p. 62

For integration in furniture (horizontal flush-mounting, remote terminal block) or a dry partition (vertical flush-mounting, terminal block in the casing)  
 Max. power: 3680 W at 230 V~  
 2P+E sockets: 16 A 250 V~ 50/60 Hz, equipped with safety shutters, conforming to standard IEC 60881-1  
 USB chargers: 110-240 V~ 50/60 Hz power supply, conforming to standard IEC 62368-1  
 RJ 45 and HDMI sockets: feedthrough sockets

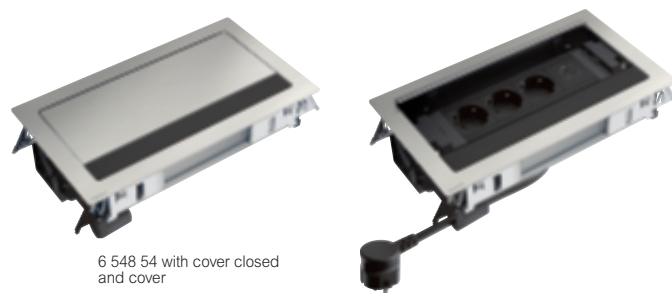
Pack	Cat.No	Incara™ Multilink for integration in furniture
		Extruded aluminium. Equipped with Mosaic functions With 2 m cord and 2P+E plug Compatible desk thickness 10-40 mm
1	6 547 89	<b>4 modules</b> Composition: 1 x 2P+E socket + 1 x 15 W USB Type-A + Type-C charger
1	6 547 79	● Black metal
1	6 547 85	○ White
1	6 547 85	● Black
1	6 547 93	<b>6 modules with 30 W Power Delivery charger</b> Composition: 2 x 2P+E sockets + 1 x 15 W USB Type-C 30 W Power Delivery charger
1	6 547 90	● Black metal
1	6 547 80	○ White
1	6 547 86	● Black
1	6 547 91	<b>8 modules</b> Composition: 2 x 2P+E sockets + 1 x 15 W USB Type-A + Type-C charger + 1 x RJ 45 cat. 6 UTP socket + 1 HDMI socket
1	6 547 81	● Black metal
1	6 547 81	○ White
1	6 547 87	● Black

Pack	Cat.No	Incara™ Multilink for integration in a partition
		Compatible partition thickness: 10-25 mm
1	6 548 62	<b>8 modules</b> Composition: 3 x 2P+E sockets + 1 x 15 W USB Type-A + Type-C charger
1	6 548 63	○ White
1	6 548 63	<b>12 modules</b> Composition: 3 x 2P+E sockets + 1 x 15 W USB Type-A + Type-C charger + 3 x RJ 45 cat. 6 UTP sockets, 1 module
1	6 548 63	○ White
1	6 548 65	<b>16 modules</b> 2 vertical rows of 8 modules Composition: + 3 x 2P+E sockets + 1 x 15 W USB Type-A + Type-C charger + 4 x RJ 45 cat. 6 UTP sockets, 2 modules
1	6 548 65	○ White

Other configurations available on request:  
HDMI cable reel, RJ 45 cable reel, etc.

## Incara™ Flip-up

for meeting rooms



Technical characteristics p. 63

For flush mounting in furniture, compatible table thickness 15 to 40 mm  
 Ready to use  
 Max. power: 3680 W at 230 V~  
 2P+E sockets: 16 A 250 V~ 50/60 Hz, equipped with safety shutters, conforming to standard IEC 60881-1  
 USB chargers: 110-240 V~ 50/60 Hz power supply, conforming to standard IEC 62368-1  
 Feedthrough RJ 45 and HDMI sockets  
 Snap-on fixing via retractable clamps

Pack	Cat.No	Incara™ Flip-up multi-outlets for flush mounting
		With 2 m cord and 2P+E plug Black metal cable grommet shutter
1	6 548 54	<b>8 power modules</b> Composition: - 3 x 2P+E sockets - 1 x 15 W USB Type-A + Type-C charger
1	6 548 55	● Metal
1	6 548 56	<b>8 power and data modules</b> Composition: - 2 x 2P+E sockets - 1 x RJ 45 cat. 6 UTP feedthrough socket, 1 module - 1 x feedthrough HDMI socket - 1 x 15 W USB Type-A + Type-C charger
1	6 548 56	● Metal
1	6 548 57	<b>12 power modules</b> Composition: - 5 x 2P+E sockets - 1 x 15 W USB Type-A + Type-C charger
1	6 548 57	● Metal
1	6 548 57	<b>12 power and data modules</b> Composition: - 3 x 2P+E sockets - 3 x RJ 45 cat. 6 UTP feedthrough sockets, 1 module - 1 x feedthrough HDMI socket - 1 x 15 W USB Type-A + Type-C charger
1	6 548 57	● Metal

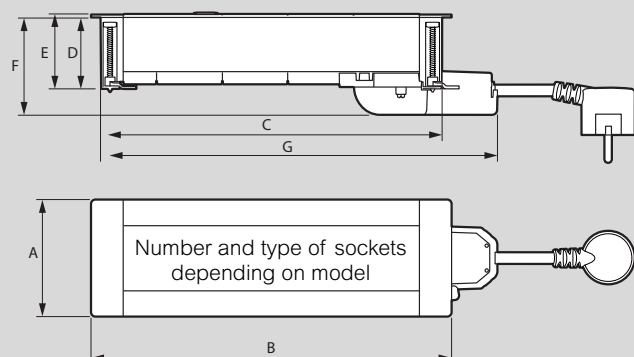
Other configurations, socket standards and finishes available on request or via the pCon software

# Incara™ Multilink

## technical characteristics

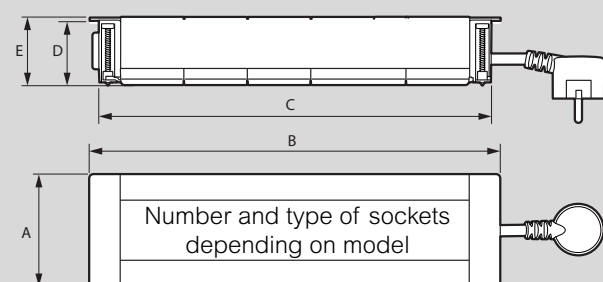
### ■ Dimensions (mm)

**Incara Multilink for flush mounting in furniture**  
Cat.Nos 6 547 79/80/81/85/86/87/89/90/91/93



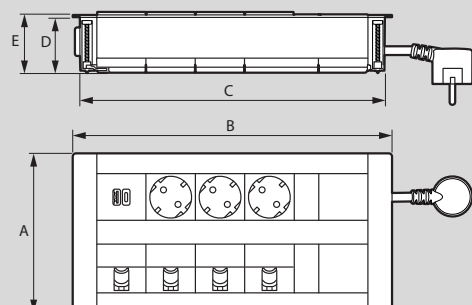
Cat.Nos	A	B	C	D	E	F	G
6 547 79/85/89	80	134.3	121.3	48.8	51.2	66.6	159.1
6 547 80/86/90/93	80	201.5	188.5	48.8	51.2	66.6	188.5
6 547 81/87/91	80	246.5	233.5	48.8	51.2	66.6	271.3

**Incara Multilink for flush mounting in a partition Cat.Nos 6 548 62/63**



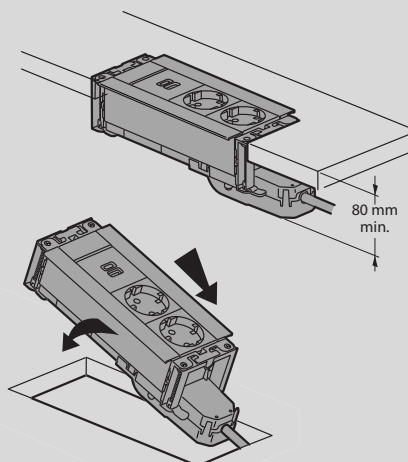
Cat.Nos	A	B	C	D	E
6 548 62	80	291.5	278.5	50.7	53.2
6 548 63	80	404	391	50.7	53.2

**Incara Multilink for flush mounting in a partition Cat.No 6 548 65**

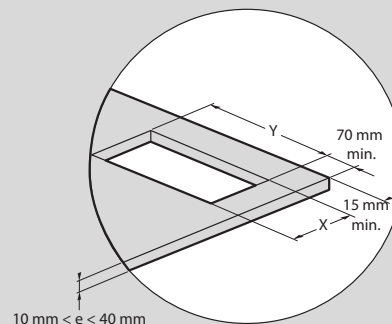


Cat.Nos	A	B	C	D	E
6 548 65	145	291.5	278.5	50.7	53.2

### ■ Installation and fixing in furniture



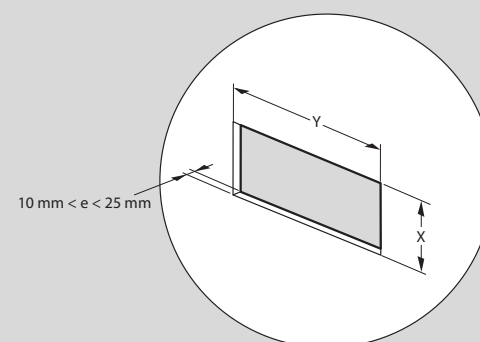
### ■ Drilling dimensions for installing in furniture



Cat.Nos	X ± 1 mm	Y ± 1 mm
6 547 79/85/89	67	125
6 547 80/86/90	67	193
6 547 81/87/91	67	238
6 547 93	67	215

**Note:** For other cut-outs: see the product data sheet available online

### ■ Drilling dimensions for installing in a wall



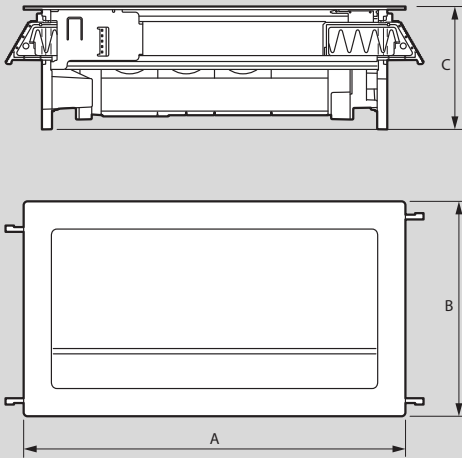
Cat.Nos	X ± 1 mm	Y ± 1 mm
6 548 62	67	283
6 548 63	67	396
6 548 65	132	283

**Note:** For other cut-outs: see the product data sheet available online

# Incara™ Flip-up

## technical characteristics

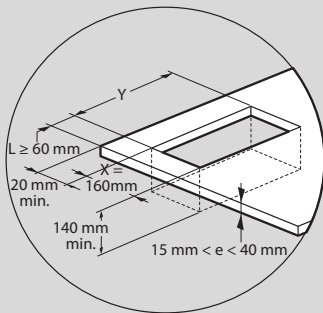
### ■ Dimensions (mm)



Cat.Nos	A	B	C
6 548 54/55	303	170.5	97.5
6 548 56/57	303		

### ■ Installing on a desktop

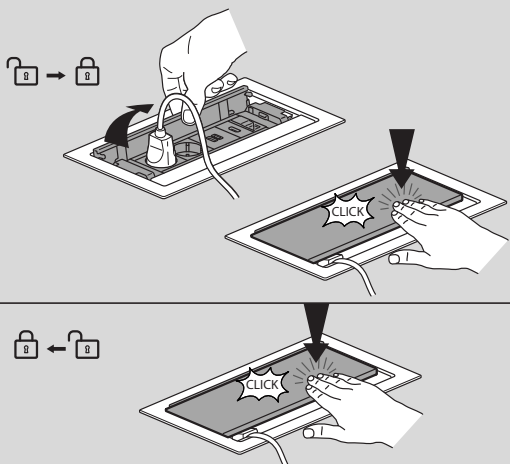
Drilling dimensions and maximum cut-out radius in corners



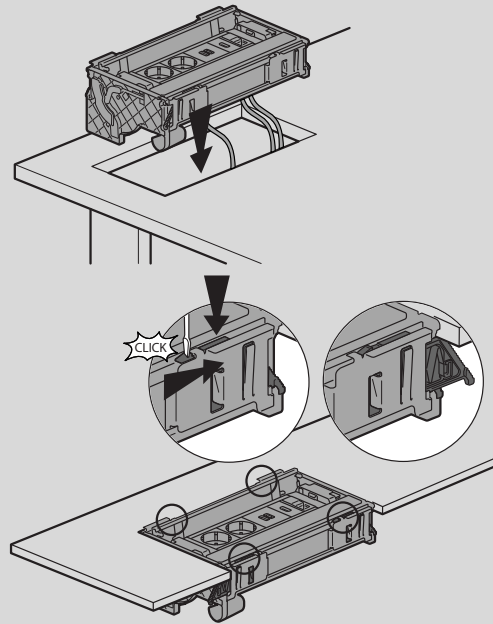
Cat.Nos	Y ± 1 mm
6 548 54/55	286
6 548 56/57	376

**Note:** For other cut-outs: see the product data sheet available online

### ■ Use

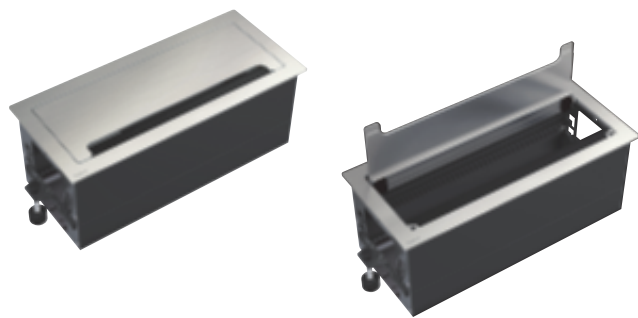


### ■ Insertion and fixing



## Incara™ Top Access

for offices and meeting rooms



6 548 70 with cover closed and cover open

Technical characteristics p. 65

For flush mounting in furniture, compatible table thickness 10 to 40 mm  
Metal

Easy storage for an office module, multi-outlet or surplus cable in the workspace

Features a dedicated fixing system for Legrand office modules

Pack	Cat.No	Incara™ Top Access
		<b>295 mm size</b>
1	6 548 70	● Metal
1	6 548 71	○ White
1	6 548 72	● Black
		<b>385 mm size</b>
1	6 548 73	● Metal
1	6 548 74	○ White
1	6 548 75	● Black

## Incara™ Tower 60 and 120

for meeting rooms and kitchen areas



6 549 74

6 549 82

6 549 83

Technical characteristics p. 65

For flush mounting in furniture (meeting tables)

Max. power: 3680 W at 230 V~

2P+E sockets: 16 A 250 V~ 50/60 Hz, equipped with safety shutters, conforming to standard IEC 60881-1

USB chargers: 220-250 V~ power supply, conforming to standard IEC 62368-1

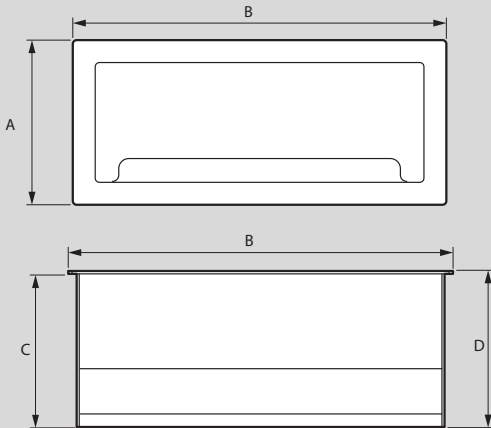
Pack	Cat.No	Incara™ Tower 60
		Ø60 mm cut-out Metal finish Manual opening With 2 m cord and 2P+E plug Compatible table thickness: 6-50 mm
1	6 549 76	<b>Power connections</b> Composition: - 4 x 2P+E sockets
1	6 549 74	Composition: - 3 x 2P+E sockets - 1 x 15 W USB Type-A + Type-C charger
1	6 549 75	<b>Power and data connections</b> Composition: - 3 x 2P+E sockets - 2 x RJ 45 cat. 6 UTP sockets - 1 x 15 W USB Type-A + Type-C charger
1	6 549 77	Composition: - 4 x 2P+E sockets - 2 x RJ 45 cat. 6 UTP sockets
		<b>Incara™ Tower 120</b>
		Ø121 mm cut-out Black/metal finish Automatic opening Functions distributed on all 4 sides Ideal for round tables With 2 m cord and 2P+E plug Compatible table thickness: 6-80 mm
1	6 549 82	<b>Power connections</b> Composition: - 4 x 2P+E sockets - 2 x 15 W USB Type-A + Type-C chargers
1	6 549 83	<b>Power connections with wireless charger</b> Composition: - 4 x 2P+E sockets - 2 x 15 W USB Type-A + Type-C chargers - 1 wireless charger (glass, with LED to indicate charger status)



# Incara™ Top Access

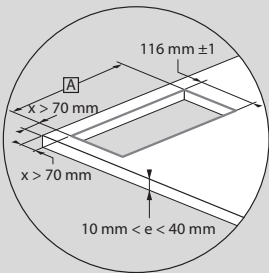
technical characteristics

## ■ Dimensions (mm)



	A	B	C	D
Incara™ Top Access 295	130	295	120	122.2
Incara™ Top Access 385		385		

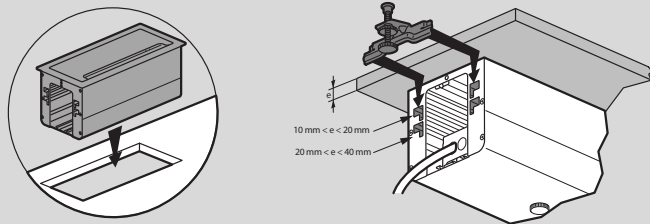
## ■ Cut-out for corners



	6 548 70/71/72	6 548 73/74/75
A	284 mm ± 1	374 mm ± 1

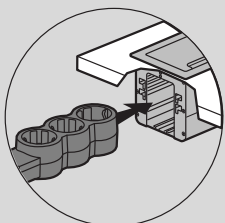
**Note:** For other cut-outs: see the product data sheet available online

## ■ Insertion and fixing

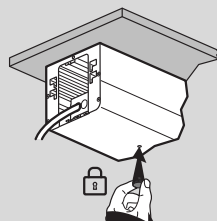
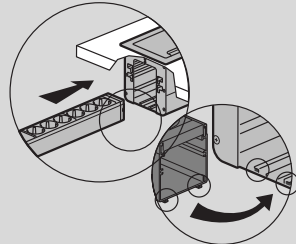


## ■ Installing a socket outlet unit

Standard multi-outlet



Legrand office modules

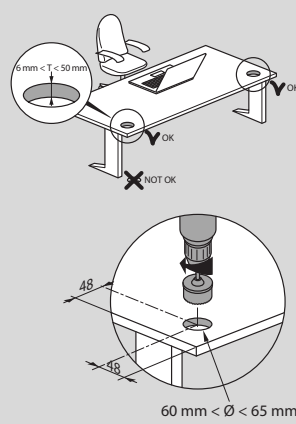


# Incara™ Tower 60 and 120

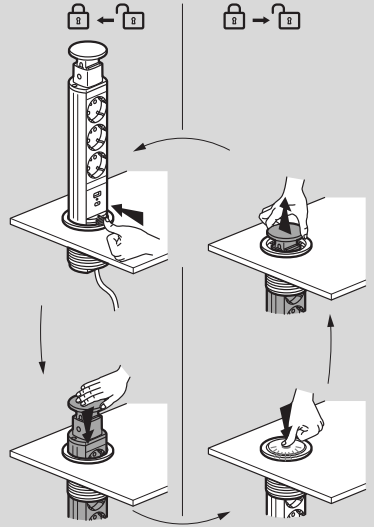
technical characteristics

## ■ Incara™ Tower 60

Drilling dimensions

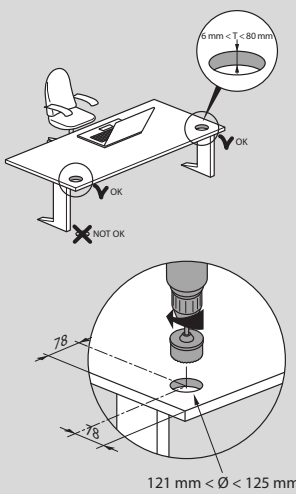


Use

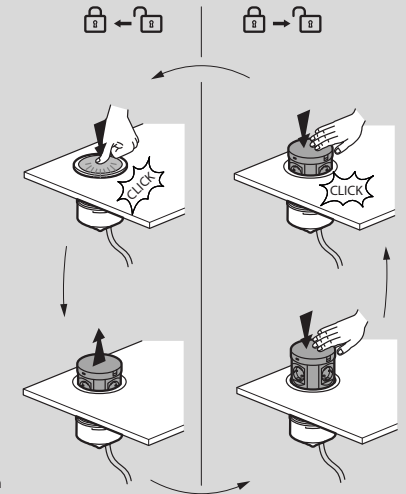


## ■ Incara™ Tower 120

Drilling dimensions



Use



# Incara™ Electr'On

for offices and collaborative spaces



Technical characteristics p. 67

Portable product for use with Zamak base and non-slip surface  
Fixing accessory Cat.No 6 549 38 to be ordered separately

### Pack Cat.No 15 W USB Type-A + Type-C charger kits

		With integrated finish and 2.5 m braided fabric power cord 110-240 V~ 50/60 Hz power supply Conform to standard IEC 62368-1
1	6 549 22	<b>1-gang</b> ○ White
1	6 549 23	● Black

### Pack Cat.No 15 W USB Type-A + Type-C chargers

		With 2.5 m braided fabric power cord 110-240 V~ 50/60 Hz power supply Conform to standard IEC 62368-1
		<b>1-gang</b> Base to be equipped with a 1-gang finish Cat.Nos 6 549 30/31/32/33
1	6 549 18	○ White
1	6 549 20	● Black

### Pack Cat.No 2P+E flush sockets

		Sockets specially designed for passageways (30,000 operations), equipped with safety shutters With 2.5 m braided fabric power cord 16 A 250 V~ 50/60 Hz Conform to standard IEC 60881-1
		<b>1-gang</b> Base to be equipped with a 1-gang finish Cat.Nos 6 549 30/31/32/33
1	6 549 06	○ White
1	6 549 07	● Black
		<b>2-gang</b> Base to be equipped with a 2-gang finish Cat.Nos 6 549 34/35/36/37
1	6 549 10	○ White
1	6 549 11	● Black

### Pack Cat.No 2P+E flush sockets + 15 W USB Type-A + Type-C chargers

		Sockets specially designed for passageways (30,000 operations) and equipped with safety shutters With 2.5 m braided fabric power cord 2P+E sockets: 16 A 250 V~ 50/60 Hz Conform to standard IEC 60881-1 USB chargers: 110-240 V~ 50/60 Hz power supply Conform to standard IEC 62368-1
		<b>2-gang</b> Base to be equipped with a 2-gang finish Cat.Nos 6 549 34/35/36/37
1	6 549 08	○ White
1	6 549 09	● Black

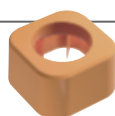
### Pack Cat.No Finishes

		Locked in place by a 1/4 turn clip with built-in anti-theft system
		<b>1-gang</b>
1	6 549 31	● Oak
1	6 549 30	● Concrete
1	6 549 32	○ White plastic
1	6 549 33	● Black plastic
		<b>2-gang</b>
1	6 549 35	● Oak
1	6 549 34	● Concrete
1	6 549 36	○ White plastic
1	6 549 37	● Black plastic

### Pack Cat.No Fixing bracket

		Angled metal bracket for ergonomic positioning as close to the user as possible Compatible with Incara Electr'On 1-gang and 2-gang
1	6 549 38	● Black

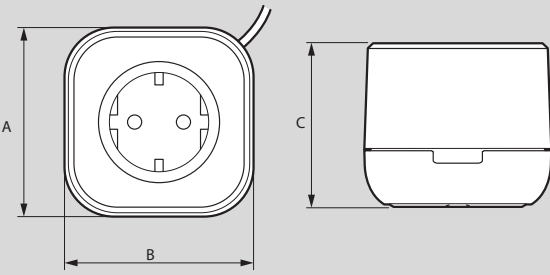
Other configurations and other finishes available on request or via the pCon software



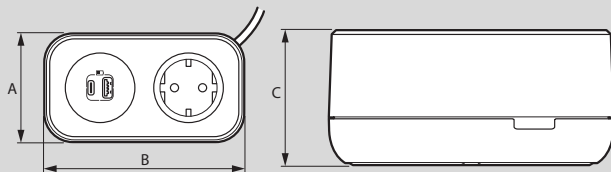
# Incara™ Electr'On

## technical characteristics

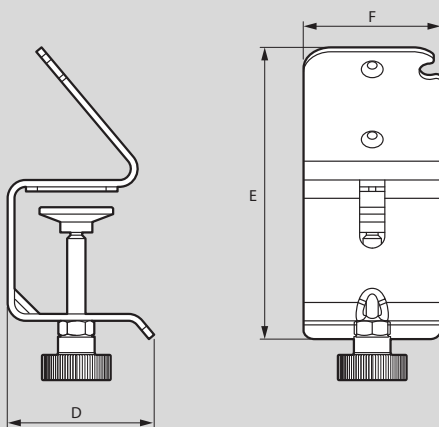
### ■ Dimensions (mm)



Cat.Nos	A	B	C
6 549 06/07/18/20/22/23	76	76	66.3

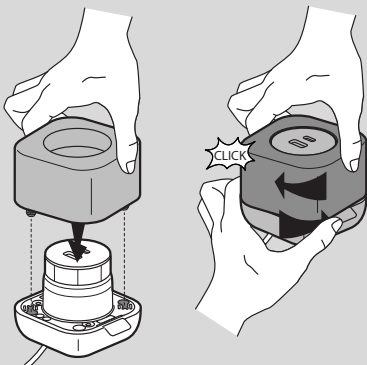


Cat.Nos	A	B	C
6 549 08/09/10/11	76	140	66.4

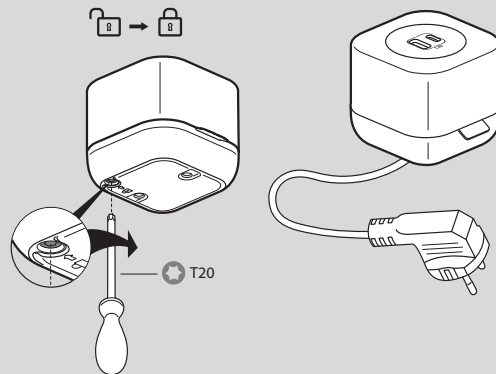


Cat.Nos	D	E	F
6 549 38	64	127	60

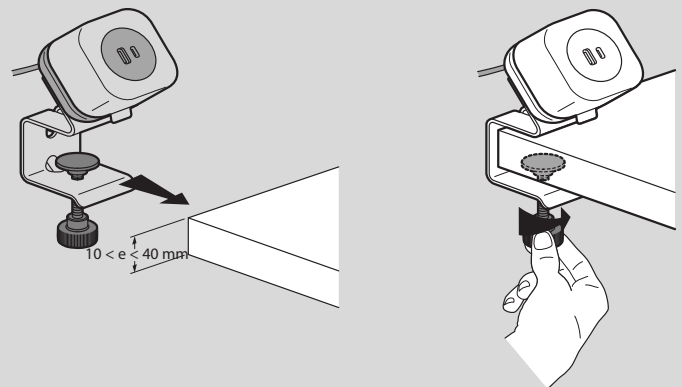
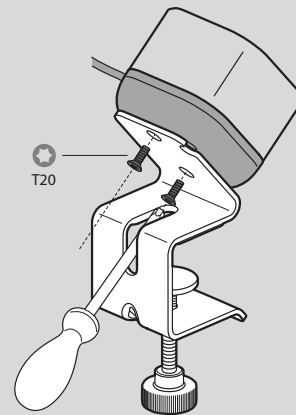
### ■ Mounting the finish on the base



### ■ Mounting the finish on the base (continued)



### ■ Installing on the mounting bracket Cat.No 6 549 38



## Incara™ On Desk pre-equipped equipped with power cord



6 535 65

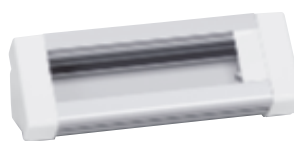


6 535 68

Aluminium outlet units  
2P+E sockets - 16 A - 250 V~, equipped with safety shutters  
Wired and equipped with a 3 m power cord with a 2P+E plug (H05VVF, 3-core 1.5 mm<sup>2</sup>)  
Conform to standard IEC 60884-1  
Max. power 3680 W at 230 V~ per circuit

Pack	Cat.No	Incara™ On Desk office modules with power sockets
1	6 535 65	<b>With illuminated switch</b> Equipped with: - 4 x 2P+E sockets - 1 illuminated switch
1	6 535 66	Equipped with: - 6 x 2P+E sockets - 1 illuminated switch
1	6 535 67	<b>With 3 A/15 W USB Type-A + Type-C charging module</b> Equipped with: - 3 x 2P+E sockets - 1 x 15 W USB Type-A + Type-C charging module
1	6 535 68	<b>With tamperproof sockets</b> Equipped with: - 2 x 2P+E sockets - 2 x 2P+E tamperproof sockets - 2 x RJ 45 Cat. 6 UTP sockets, 1 module

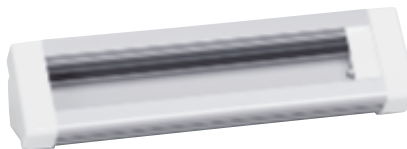
## Incara™ On Desk to be equipped



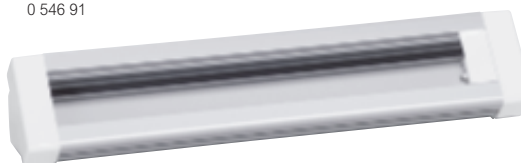
0 546 90



0 546 99



0 546 91



0 546 92

Can also take USB chargers

Pack	Cat.No	Incara™ On Desk office modules to be equipped
1	0 546 90	To be equipped with Mosaic functions Empty 8-module unit
1	0 546 91	Empty 12-module unit
1	0 546 92	Empty 16-module unit
20	0 546 99	<b>Accessory</b> Fixing accessory for mounting the outlet unit on furniture



# Incara™ Link'On

for meeting rooms



6 548 88

Portable, ready-to-use multi-outlet extensions for meeting rooms  
 For connecting multimedia devices as close to the user as possible  
 without having to drill into furniture  
 Max. power: 3680 W at 230 V~ per circuit  
 2P+E sockets: 16 A 250 V~ 50/60 Hz, equipped with safety shutters  
 USB chargers: 110-240 V~ 50/60 Hz power supply

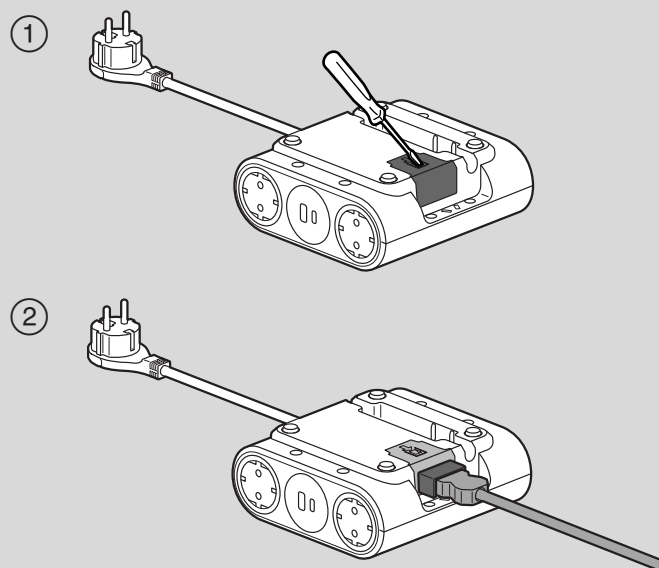
Pack	Cat.No	Standalone Incara™ Link'On outlet unit
1	6 548 86	With 2.5 m fabric power cord and 2P+E plug Composition: - 6 x 2P+E flush sockets ● Black
1	6 548 87	<b>Extendable Incara™ Link'On outlet unit</b> With 2.5 m power cord and 2P+E plug Can be used together with extension Cat.No 6 548 89 for more users ● Black Composition: - 4 x 2P+E sockets - 2 x 15 W USB Type-A + Type-C chargers - 1 x 2 m HDMI cable - Integrated Wieland GST18i3 connector for connecting extension Cat.No 6 548 89
1	6 548 88	● Black Composition: - 4 x 2P+E sockets - 2 x 15 W USB Type-A + Type-C chargers - Integrated Wieland GST18i3 connector for connecting extension Cat.No 6 548 89
1	6 548 89	<b>Extension for Incara™ Link'On</b> With 1.5 m power cord with Wieland GST18i3 connector ● Black Extension for Link'On Cat.Nos 6 548 87/88 Composition: - 4 x 2P+E sockets - 2 x 15 W USB Type-A + Type-C chargers

# Incara™ Link'On

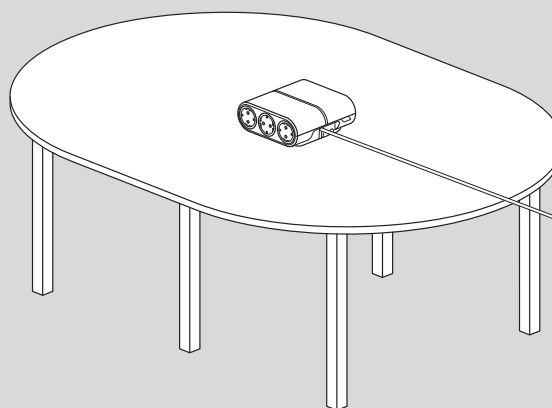
technical characteristics

## Using two extendable Incara™ Link'On units together

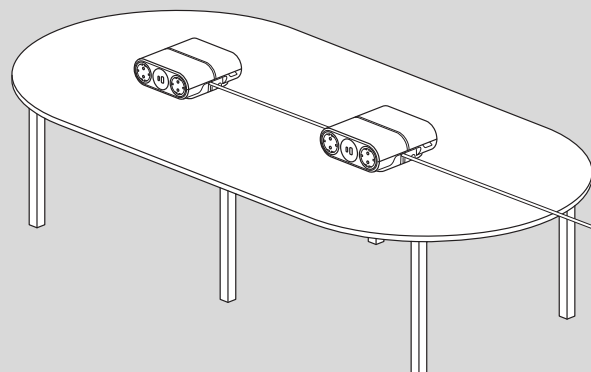
Cat.Nos 6 548 87/88/89



## 6-socket Incara™ Link'On in a meeting room



## Using two 4-socket Incara™ Link'On units together in a meeting room



# Incara™ Vertebra

for offices and desktops



6 549 92

6 549 90

For securing and running cables vertically from a desk to the floor or for running cables horizontally directly under a desk surface

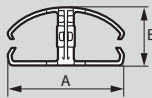
Pack	Cat.No	Desk Vertebra
1	6 549 92	<b>2 compartments - 120 cm</b> Two possible uses: - fixed position with rotation around 2 axes - flexible position with rotation around 4 axes Attached using screws or double-sided adhesive pads (supplied) Ideal for running cables horizontally
1	6 549 93	
		● Grey
		● Black
1	6 549 90	<b>4 compartments - 80 cm</b> Vertical Weighted metal base Can be screwed onto the underside of a desk or inserted in a Ø80 mm cut-out
1	6 549 91	
		● Grey
		● Black

# Incara™ Vertebra

technical characteristics

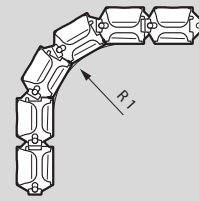
## Dimensions (mm)

### 2-compartment Vertebra

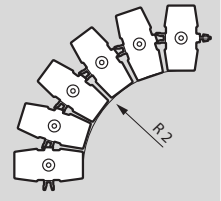


A	54
B	27

Bend radius

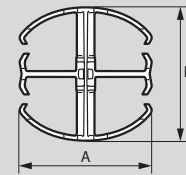


R1 50 min.



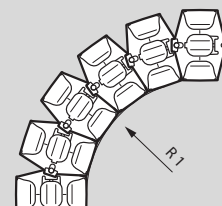
R2 80 min.

### 4-compartment Vertebra

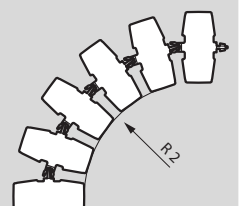


A	54
B	54

Bend radius



R1 80 min.



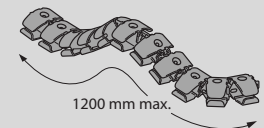
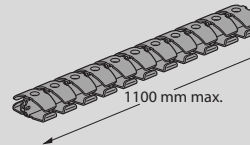
R2 80 min.

## 2-compartment Vertebra

Fixed position

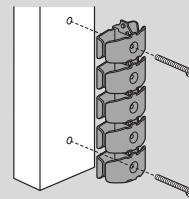


Flexible position

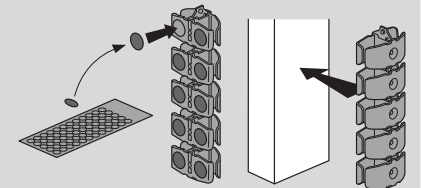


## Mounting a 2-compartment Vertebra

Using screws Ø3.5 mm max. (not supplied)

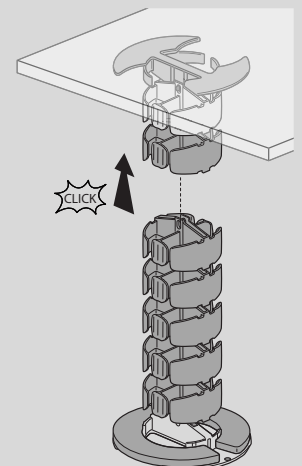
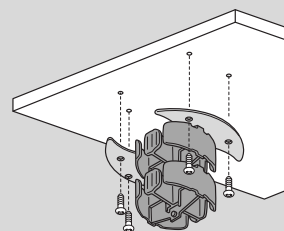


Using double-sided adhesive pads (supplied)



Recommended installation temperature: +15 °C to +25 °C

## Mounting a 4-compartment Vertebra



## Multi-outlet extensions

### charging station



6 945 00



6 945 06

Technical characteristics p. 72

For indoor use only

Pack	Cat.No	
3	6 945 00	<b>Multi-outlet charging station with wireless charger and USB ports - for bedrooms and offices</b> 10 A - 230 V - 2300 W max. Compact multi-outlet charging station with 5 ports, equipped with: - 2 x 2P+E flush sockets - 1 x 10 W Qi-certified wireless charger for smartphones (with non-slip surface and charging indicator), direct on-screen display during charging - USB Type-A + Type-C ports: 3 A - 5 V, 15 W max. - 1 x 2 m black 3-core 1.5 mm <sup>2</sup> power cord
3	6 945 06	

- Taupe/Dark grey
- White/Dark grey

## Multi-outlet extensions

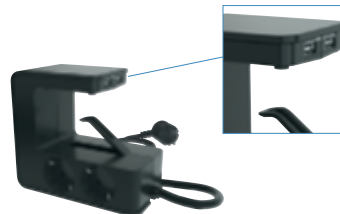
### multi-function



6 948 10



6 948 11



6 948 12

Technical characteristics p. 72

For indoor use only

Pack	Cat.No	
1	6 948 10	<b>Multi-outlets with tablet stand</b> 16 A - 230 V - 3680 W Equipped with: - 3 x 2P+E sockets - 2 x USB Type-A ports (3.9 A in total including 1 x 2.4 A Qualcomm Quick Charge port) for charging mobile devices - non-slip tablet stand - On/Off switch with a resettable circuit breaker and fuse carrier (16 A) - 1 x 1.5 m 3-core 1.5 mm <sup>2</sup> braided power cord
1	6 948 11	
10	6 948 12	<b>Clip-on multi-outlet</b> 16 A - 230 V - 3680 W max. Equipped with: - 4 x 2P+E sockets - 2 x USB Type-A ports (3.4 A in total) - illuminated On/off switch - 1 x 1.5 m 3-core 1.5 mm <sup>2</sup> power cord that can rotate 90° Clips easily onto a table or desk (max., thickness: 63 mm) Allows socket outlets to be hidden under a desk while leaving the USB charging modules freely accessible

- White
- Black

#### Clip-on multi-outlet

16 A - 230 V - 3680 W max.  
 Equipped with:  
 - 4 x 2P+E sockets  
 - 2 x USB Type-A ports (3.4 A in total)  
 - illuminated On/off switch  
 - 1 x 1.5 m 3-core 1.5 mm<sup>2</sup> power cord that can rotate 90°  
 Clips easily onto a table or desk (max., thickness: 63 mm)  
 Allows socket outlets to be hidden under a desk while leaving the USB charging modules freely accessible

## Special-purpose multi-function multi-outlet extensions

### technical characteristics

#### Multi-outlet charging station with wireless charger and USB ports Cat.Nos 6 945 00/06

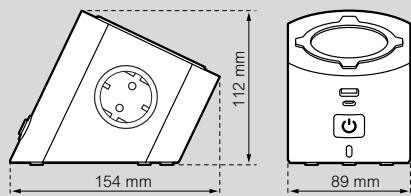
##### Example of use



Available in two finishes to blend into a home or work environment



##### Dimensions (mm)



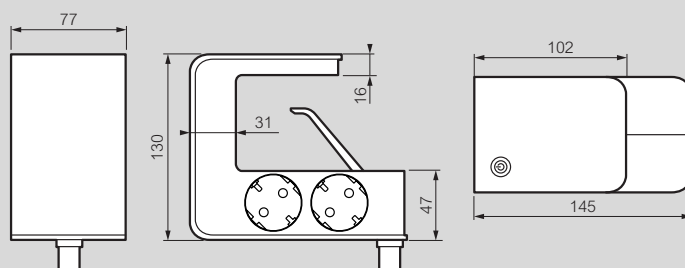
#### Multi-outlet with tablet stand Cat.Nos 6 948 10/11 (continued)

##### Example of use



#### Clip-on multi-outlet Cat.No 6 948 12

##### Dimensions (mm)



#### Multi-outlet with tablet stand Cat.Nos 6 948 10/11

##### Examples of use





# Catalogue number index

Cat.Nos	Page	Pack	Cat.Nos	Page	Pack	Cat.Nos	Page	Pack	Cat.Nos	Page	Pack	Cat.Nos	Page	Pack
<b>0 546 00</b>			6 547 12	55	1	6 547 46	58	1	<b>6 548 00</b>			6 548 63	61	1
0 546 90	68	1	12F	55	1	47	58	1	6 548 00	58	1	65	61	1
91	68	1	13	55	1	48	58	1	01	58	1	70	64	1
92	68	1	13F	55	1	49	58	1	02	58	1	71	64	1
99	68	20	14	55	1	50	58	1	03	58	1	72	64	1
<b>0 776 00</b>			14F	55	1	51	58	1	04	58	1	73	64	1
0 776 38L	56	1	15	55	1	55	58	1	05	58	1	74	64	1
39L	56	1	15F	55	1	56	58	1	06	58	1	75	64	1
40L	56	1	16	55	1	57	58	1	07	58	1	86	69	1
41L	56	1	16F	55	1	59	58	1	08	58	1	87	69	1
42L	56	1	25	54	1	60	58	1	09	58	1	88	69	1
43L	56	1	25F	54	1	61	58	1	10	58	1	89	69	1
45L	56	1	26	54	1	63	58	1	11	58	1	<b>6 549 00</b>		
46L	56	1	26F	54	1	64	58	1	12	58	1	6 549 06	66	1
<b>6 535 00</b>			27	54	1	65	58	1	14	58	1	07	66	1
6 535 65	68	1	27F	54	1	79	61	1	22	58	1	08	66	1
66	68	1	28	54	1	80	61	1	23	58	1	09	66	1
67	68	1	28F	54	1	81	61	1	24	58	1	10	66	1
68	68	1	30	54	1	85	61	1	25	58	1	11	66	1
<b>6 547 00</b>			30F	54	1	86	61	1	26	58	1	18	66	1
6 547 10	55	1	31	54	1	87	61	1	28	58	1	20	66	1
10F	55	1	31F	54	1	89	61	1	54	61	1	22	66	1
11	55	1	32	54	1	90	61	1	55	61	1	23	66	1
11F	55	1	32F	54	1	91	61	1	56	61	1	30	66	1
			33	54	1	93	61	1	57	61	1	31	66	1
			33F	54	1	99	54, 55	1	62	61	1	32	66	1
			39	54	15							<b>6 945 00</b>		
												6 945 00	71	3
												06	71	3
												<b>6 498 10</b>		
												6 948 10	71	1
												11	71	1
												12	71	10



FOLLOW  
US ON

@ website: [www.legrand.eg](http://www.legrand.eg)

f legrand

📷 legrandegypt



**EMB Electrical Industries S.A.E.**

**Headquarter office**

Pyramids Heights Office Park  
KM 22 Cairo - Alex. desert road  
Building 1B, 12556  
Tel.: +202 3536 0000  
Fax: +202 3536 0001  
[www.legrand.eg](http://www.legrand.eg)