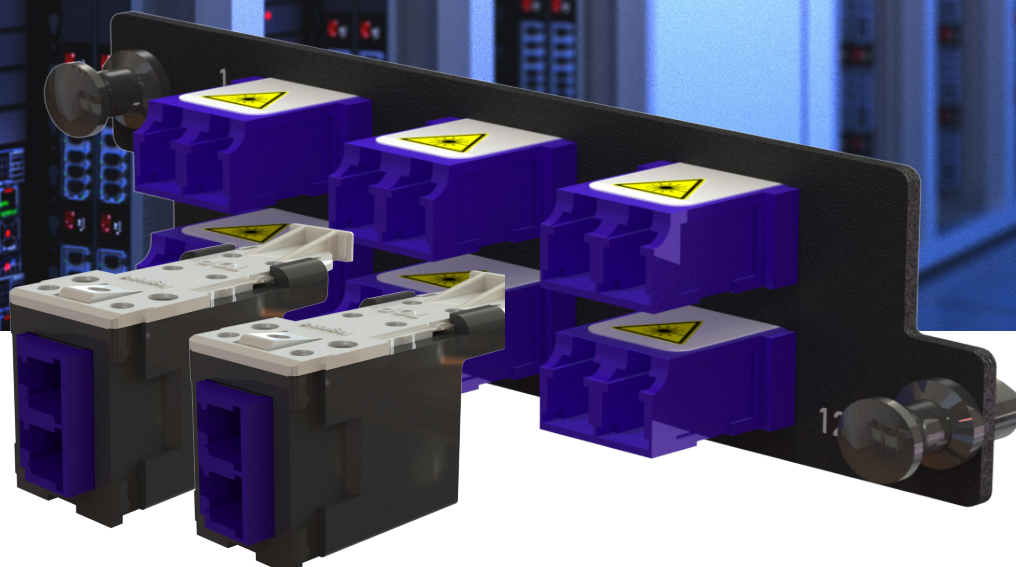


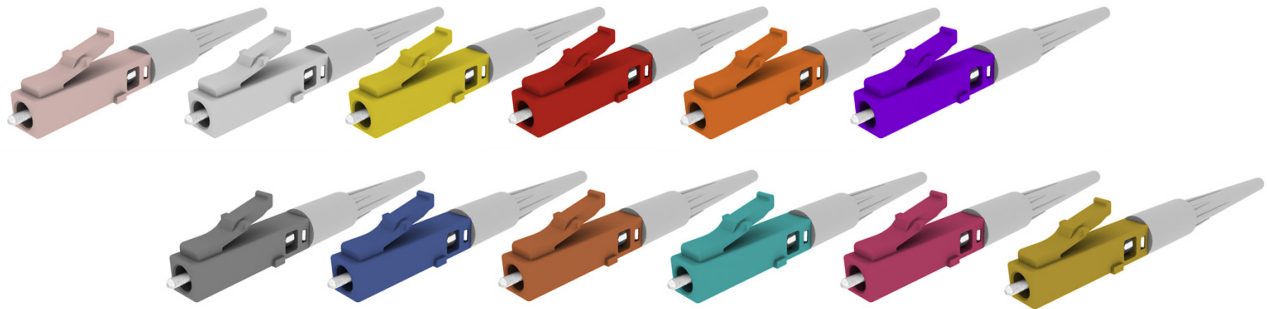


*LEGRAND® KEYED LC*  
**FIBER SOLUTIONS**



designed to be better.™

 **legrand®**



## *Legrand Keyed LC Fiber Solutions*

---

**For critical networks, the security and integrity of your information simply cannot be compromised. To build a secure network that protects sensitive data and classified information, you need a cabling solution that will help protect computer systems and networks from outside intrusion and internal abuse. Legrand Keyed LC Fiber Solutions do just that, by preventing inadvertent or unauthorized access to optical fiber network ports.**

Legrand keyed LC fiber solutions provide a simple and convenient way to physically prevent the user from making an unauthorized connection by blocking access to specific optical ports, whether they are at a workstation outlet or in a telecommunications room or data center. This is particularly important for government, finance, military and other facilities where multiple networks having different security level access requirements may be co-located.

### **FEATURES & BENEFITS**

- Up to thirteen unique keying options/colors for a wide range of network security systems, easy identification and network management.
- Keyed workstation adapter modules are available for TracJack® and High Density Jack (HDJ) style Face plates and surface mount boxes for complete system design flexibility.
- Keyed LC adapters have the option to be keyed in the front only (user's side) or on both sides (user's and technician's) depending on the security requirements.
- All Legrand keyed LC fiber products are engineered to be compatible with other Legrand products to provide an end to end, data center to desktop solution.

Legrand keyed LC solutions provide physical separation of multiple networks for high security applications. Color-coded keys allow easy identification and facilitate network administration.



## *Legrand Keyed LC Fiber Solutions*

---

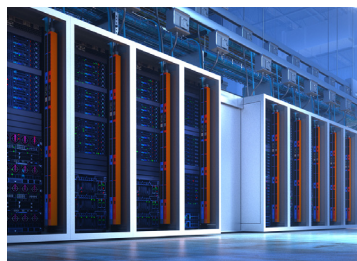
Legrand is transforming the way IT infrastructure is being deployed. Simplify installation and maintenance by utilizing the Legrand Field Sales Engineering team. This value-added resource is comprised of highly-skilled engineers and product managers that represent the service layer of Legrand. This group will help oversee your projects – delivering practical solutions to common problems, flawless deployment, and immediate return on your investment

### **FIELD SALES ENGINEERING PROVIDES**



#### **Design**

- Detailed planning for growth and scalability
- Layouts
- Drawings
- Situational analysis
- RFI/RFP review



#### **Implementation**

- Installation
- Specification validation
- Configuration
- Specification document review



#### **Support**

- Warranty
- Tech support
- Configuration support

---

To engage Legrand's Field Sales Engineering team  
**Email:** PSET@LEGRAND.US | **Phone number:** 1.877.717-0498

## Pre-polished Multimode and Single-mode Keyed Splice on Connectors

Legrand pre-polished keyed LC multimode and single-mode connectors provide the same ease of installation and high-quality performance as our line of standard LC pre-polished connectors. Up to twelve keys/colors of connectors are possible with unique physical keying configurations.

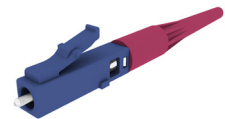
The fusion splicing method is accomplished by fusing the field fiber to the factory-cleaved fiber stub to ensure ease of use and optimal performance. The unique boot allows the entire splice to be concealed and protected. Additionally, an extended brass crimp sleeve provides extra protection to the splice and utilizes the Kevlar® for maximized pull strength.

### FEATURES

- 12 color/key configurations available
- Internal keying feature prevents tampering
- High quality 1.25 mm zirconia ferrules used
- A factory-cleaved 900um fiber stub ensures ease of use and optimal performance
- 50/125 µm and 9/125 µm laser-optimized fiber types available
- 1.6 in boot protects the splice for easy cable management

### Pre-polished Multimode and Single-mode Keyed Splice on Connectors

Part Numbers	Description
205KKF9GA-50E-x	Infinium Keyed LC Splice-On Connector (SOC) For 900um Fiber, 50/125 Multimode OM4 (6 Pack)
205KKF9GD-50E-x	Infinium Keyed LC Splice-On Connector (SOC) For 900um Fiber, 50/125 Multimode OM4 (50 Pack)
205KKF9SA-09-x	Infinium Keyed LC Splice-On Connector (SOC) For 900um Fiber, 9/125 Single-Mode OS2 (6 Pack)
205KKF9SD-09-x	Infinium Keyed LC Splice-On Connector (SOC) For 900um Fiber, 9/125 Single-Mode OS2 (50 Pack)



205KKF9GA-50E-H

x in the Part number indicates color/key configuration 'x' = A (Rose), B (White), C (Yellow), D (Red), E (Orange), F (Violet), G (Gray), H (Blue), J (Brown), K (Aqua), L (Magenta), M (Green)

Note: For Bulk Keyed Splice On Connector Pack, Contact Customer Service: 1-800-934-5432



## Keyed Fiber Patch Cord Assembly Configurator

Performance Level			Connector	Connector	Polarity	Cable Diameter	Fiber Type	Jacket Color	Jacket Type	Packaging	Length	Unit of Measure	Concatenated Part Number
PN#	L3	-	KA	YA	B	2	0	Y	2	1	010	F	L1-0101B20Y21010F

<b>Performance Level</b> L1 - CORE L3 - ULTRA L4 - QUANTUM	<b>Connectors</b> xA - Rose xB - White xC - Yellow xD - Red xE - Orange xF - Violet xG - Gray xH - Blue xJ - Brown xK - Aqua xL - Magenta xM - Green xU - Black  <i>Note: Replace x with K for Keyed and Y for Non-Keyed (Example: KA for Rose Keyed, or YA for Rose Non-Keyed)</i> <i>Note: For Standard LC on one end use code 01 in the connectors column</i>	<b>Polarity</b> B - A-B (Clipped) Standard A - A-A (Clipped) N - Non-Clipped
<b>Cable Diameter</b> 2 - 2.0mm 3 - 3.0mm	<b>Jacket Type</b> 2 - Riser Duplex D - Plenum Duplex 1 - Riser Simplex S - Plenum Simplex	<b>Fiber Type</b> E - OM4 D - OM3 J - OS2 Standard O - OS2 Quantum
<b>Jacket Color</b> A - Aqua Y - Yellow	<b>Packaging</b> 0 - Bag, NO Test Results 1 - Bag, Test Results	<b>Unit of Measure</b> F - Feet M - Meters

### Instructions

Use the applicable feature tables, select the appropriate designation code and apply to the coordinating cell in the configurator.

Please Note: With hundreds of configuration options, this table has been condensed to the most common choices to simplify the trunk assembly configuration process

If you require other configuration options or assistance with designing the appropriate trunk for your application, please contact Legrand support.

**1.800.934.5432 | [customerservice.DAT@legrand.us](mailto:customerservice.DAT@legrand.us)**

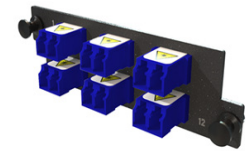
## Keyed Fiber Adapter Panel Solutions

Legrand keyed LC fiber adapter panels are available in configurations that are keyed on the front only (user's side) or on both sides (user's and technician's). The adapter panels are designed to fit Legrand Infinium HD rack mount enclosures, Infinium Modular Panels, Q-Series Rack mount and wall mount enclosures, and HDJ or TracJack Wall plates, and surface mount boxes for an end to end solution. Up to thirteen keys/ colors of connectors are possible with unique physical keying configurations.

### Keyed Solutions for Infinium HD, M4, Rack Mount Enclosures and Panels

#### Infinium M4, Keyed Front Keyed Rear, HDFP Adapters – For Infinium HD M4 Enclosures

Part Numbers	Description
HDFP-LCD12ZC-x	Infinium M4 HDFP Adapter Panel, 6 Keyed Front Keyed Rear LC Duplex Adapters, 12 Fiber
HDFP-LCD16ZC-x	Infinium M4 HDFP Adapter Panel, 8 Keyed Front Keyed Rear LC Duplex Adapters, 16 Fiber



HDFP-LCD12YC-H

#### Infinium M4, Keyed Front Non-Keyed Rear, HDFP Adapters – For Infinium HD M4 Enclosures

Part Numbers	Description
HDFP-LCD12YC-x	Infinium M4 HDFP Adapter Panel, 6 Keyed Front Non-Keyed Rear LC Duplex Adapters, 12 Fiber
HDFP-LCD16YC-x	Infinium M4 HDFP Adapter Panel, 8 Keyed Front Non-Keyed Rear LC Duplex Adapters, 16 Fiber



HDFP-LCD16YC-B

x in the Part number indicates color/key configuration 'x' = A (Rose), B (White), C (Yellow), D (Red), E (Orange), F (Violet), G (Gray), H (Blue), J (Brown), K (Aqua), L (Magenta), M (Green), U (Black)



## HDFP PLATFORMS

#### Infinium HD Enhanced Enclosure - M4

Part Numbers	Description	RU	Max LC/RU	Adapters/ RU
INFC01U-M4-E	1U Infinium High Density (HD) Enhanced Fiber Enclosure M4 Drawer Face	1	96	4
INFC02U-M4-E	2U Infinium High Density (HD) Enhanced Fiber Enclosure M4 Drawer Face	2	192	8
INFC04U-M4-E	4U Infinium High Density (HD) Enhanced Fiber Enclosure M4 Drawer Face	4	384	16

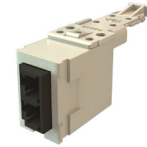


INFC02U-M4

*Keyed Solutions for Infinium Modular Panels, HDJ Face Plates, or Surface Mount Boxes*

**Infinium, Keyed Front Keyed Rear, HDFM Adapters**

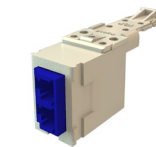
Part Numbers	Description
HDFM-KLC2CX-00	Infinium HD Fiber Module, Keyed Front Keyed Rear LC Duplex (2 Fibers), HDJ Insert, Black Housing
HDFM-KLC2CX	Infinium HD Fiber Module, Keyed Front Keyed Rear LC Duplex (2Fibers), HDJ Insert, Fog White Housing



HDFM-KLC2CH-00

**Infinium, Keyed Front Non-Keyed Rear, HDFM Adapters**

Part Numbers	Description
HDFM-HLC2CX-00	Infinium HD Fiber Module, Keyed Front Non-Keyed Rear LC Duplex (2 Fibers), HDJ Insert, Black Housing
HDFM-HLC2CX	Infinium HD Fiber Module, Keyed Front Non-Keyed Rear LC Duplex (2Fibers), HDJ Insert, Fog White Housing



HDFM-HLC2CK-00

*HDFM Modular Platforms*

**Infinium Modular Panel**

*Flat*                      *Angled*

Part Numbers	Description
PHDFMU48	1U 48-Port HDJ Series Modular Panel w/label kit



HDFM-KLC2CH-00

**HDJ Mixed Media Panel**

*Flat*                      *Angled*

Black	White	Black	White
-------	-------	-------	-------

Part Numbers	Description
PHDHJU24	1U 24-Port HDJ Series Modular Panel
PHDHJU48	1U 48-Port HDJ Series Modular Panel
PHDHJU72	2U 72-Port HDJ Series Modular Panel



PHAHJU48

**HDJ Workstation Face Plates**

Part Numbers	Description
403HDJ11	1-Port Face Plate, HDJ Jack, Single-Gang
403HDJ12	2-Port Face Plate, HDJ Jack, Single-Gang
403HDJ13	3-Port Face Plate, HDJ Jack, Single-Gang
403HDJ14	4-Port Face Plate, HDJ Jack, Single-Gang
403HDJ16	6-Port Face Plate, HDJ Jack, Single-Gang
403HDJ212	12-Port Face Plate, HDJ Jack, Dual-Gang



403HDJ11

**HDJ Workstation Face Plates**

Part Numbers	Description
404-HDJ1-XX	1-Port HDJ Plastic Surface Mount Box, Plenum Rated
404HDJ2-XX	2-Port HDJ Plastic Surface Mount Box, Plenum Rated
404HDJ4-99	4-Port HDJ Plastic Surface Mount Box, Ivory
404HDJ4	4-Port HDJ Plastic Surface Mount Box, Fog White



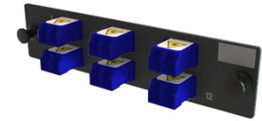
404-HDJ1-XX

Note: Includes snap-in label fields. Standard color is Fog White. Replace -XX with -88 for White

## Keyed Solutions for Q-Series Rack or Wall Mount Enclosures

### Q-Series, Keyed Front Keyed Rear, OFP Adapters

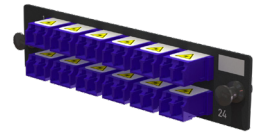
Part Numbers	Description
OFP-LCD12ZC-x	Q-Series Keyed Front Keyed Rear OFP Adapter Panel, 6 LC Duplex Adapters, 12 Fibers
OFP-LCD16ZC-x	Q-Series Keyed Front Keyed Rear OFP Adapter Panel, 8 LC Duplex Adapters, 16 Fibers
OFP-LCD24ZC-x	Q-Series Keyed Front Keyed Rear OFP Adapter Panel, 12 LC Duplex Adapters, 24 Fibers



OFP-LCD12ZC-H

### Q-Series, Keyed Front Non-Keyed Rear, OFP Adapters

Part Numbers	Description
OFP-LCD12YC-x	Q-Series Keyed OFP Keyed front Non-Keyed Rear Adapter Panel, 6 LC Duplex Adapters, 12 Fibers
OFP-LCD16YC-x	Q-Series Keyed front Non-Keyed Rear OFP Adapter Panel, 8 LC Duplex Adapters, 16 Fibers
OFP-LCD24YC-x	Q-Series Keyed OFP Keyed front Non-Keyed Rear Adapter Panel, 12 LC Duplex Adapters, 24 Fibers



OFP-LCD24ZC-H

x in the Part number indicates color/key configuration 'x' = A (Rose), B (White), C (Yellow), D (Red), E (Orange), F (Violet), G (Gray), H (Blue), J (Brown), K (Aqua), L (Magenta), M (Green), U (Black)



## Platforms for Keyed OFP Adapters

### Q-Series Rack Mount Enclosure

Part Numbers	Description	Rack Units	Max LC Port Count	Max Cassette Count
EQ01U-CHC	Enclosure, Q-Series, Rackmount, 1U	1	72	3
EQ02U-CHC	Enclosure, Q-Series, Rackmount, 2U	2	144	6
EQ04U-CVC	Enclosure, Q-Series, Rackmount, 4U	4	288	12



EQ02U-CHC



## Platforms for Keyed OFP Adapters

---

### Q-Series Wall Mount Enclosure

Part Numbers	Description	Max Fiber Count	Max LC Port Count	Max Panel Count
WQS-02P	Q-Series 2 Panel Standard Density (SD) Wall Mount Fiber Enclosure	48	48	2
WQS-04P	Q-Series 4 Panel Standard Density (SD) Wall Mount Fiber Enclosure	96	96	4
FST4-F012C	Q-Series, Compact 12 Fiber Splice Tray	12		
WQS-STB	Q-Series Compact 12 Fiber Splice Tray Mounting Bracket (Order Separately From: FST4-F012C)			

---

## Legrand FiberSolutions & Legrand Transceivers

---

### Finding the correct transceiver for any application is fast and simple.

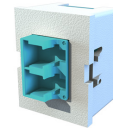
Legrand transceivers, powered by Integra, are TAA compliant and capable of all functions and features supported by their OEM counterparts. Each transceiver is rigorously tested to ensure 100% compatibility with the same equipment as their OEM equivalents. Legrand offers over 4000 transceivers for shipping within 1-3 business days—finding the correct transceiver for any application is fast and simple.



## Keyed Solutions for TracJack Faceplates and Surface Mount Boxes

### TrackJack, Keyed Front Keyed Rear, Flush Module – For TracJack Face Plates & Surface Mount Boxes

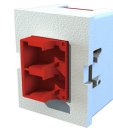
Part Numbers	Description
KTJ-2FALC2Cx	TracJack Module, Keyed Front Keyed Rear LC Duplex (2 Fibers), Multimode Adapters, 180 Degree Exit, Flush Mount



KTJ-2FALC2CK

### TrackJack, Keyed Front Non-Keyed Rear, Flush Module – For TracJack Face Plates & Surface Mount Boxes

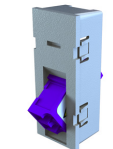
Part Numbers	Description
KTJ-1FALC2Cx	TracJack Module, Keyed Front Non-Keyed Rear LC Duplex (2 Fibers), Multimode Adapters, 180 Degree Exit, Flush Mount



KTJ-1FALC2CD

### TrackJack, Keyed Front Keyed Rear, Angled Module – For TracJack Face Plates & Surface Mount Boxes

Part Numbers	Description
KTJ-2ACL2Cx	TracJack Module, Keyed Front Keyed Rear LC Duplex (2 Fibers) Multimode Adapters, 45 Degree Angled Exit



KTJ-2ACL2CF

### TrackJack, Keyed Front Non-Keyed Rear, Angled Module – For TracJack Face Plates & Surface Mount Boxes

Part Numbers	Description
KTJ-1ACL2Cx	TracJack Module, Keyed Front Non-Keyed Rear LC Duplex (2 Fibers) Multimode Adapters, 45 Degree Angled Exit



KTJ-1ACL2CA

x in the Part number indicates color/key configuration 'x' = A (Rose), B (White), C (Yellow), D (Red), E (Orange), F (Violet), G (Gray), H (Blue), J (Brown), K (Aqua), L (Magenta), M (Green), U (Black)



## Keyed Solutions for TracJack Faceplates and Surface Mount Boxes

### TracJack Stainless Steel Faceplates

Part Numbers	Description
403STJ11	1-Port TracJack Single-Gang Stainless Steel Faceplate
403STJ12	2-Port TracJack Single-Gang Stainless Steel Faceplate
403STJ13	3-Port TracJack Single-Gang Stainless Steel Faceplate
403STJ14	4-Port TracJack Single-Gang Stainless Steel Faceplate
403STJ15	5-Port TracJack Single-Gang Stainless Steel Faceplate
403STJ16	6-Port TracJack Single-Gang Stainless Steel Faceplate
403STJ17	7-Port TracJack Single-Gang Stainless Steel Faceplate



403STJ11

### TracJack Plastic Faceplates

Part Numbers	Description
40300549	1-Port TracJack Single-Gang Plastic Faceplate
40300548	2-Port TracJack Single-Gang Plastic Faceplate
40300547	3-Port TracJack Single-Gang Plastic Faceplate
40300546	4-Port TracJack Single-Gang Plastic Faceplate
40300545	6-Port TracJack Single-Gang Plastic Faceplate
40300555	6-Port TracJack Double-Gang Plastic Faceplate
40300554	8-Port TracJack Double-Gang Plastic Faceplate
40300620	12-Port TracJack Double-Gang Plastic Faceplate



40300549

Note: Available in multiple colors – Visit [www.legrand.us](http://www.legrand.us) to view all options

## Keyed Solutions for TracJack Faceplates and Surface Mount Boxes

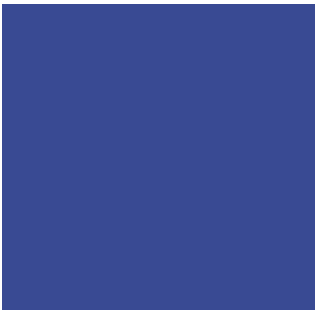
### TracJack Surface Mount Boxes

Part Numbers	Description
404TJ1	1-Port TracJack, Plenum Rated
404TJ2	2-Port TracJack, 2.59" x 2.27" x 1.20", Plenum Rated
404TJ4	4-Port TracJack, 4.80" x 3.6" x 1.16"
404TJ2X2	4-Port TracJack, 4.0" x 2.42" x 1.16", Jacks Exit From Both Sides



404TJ4

Note: Available in multiple colors – Visit [www.legrand.us](http://www.legrand.us) to view all options



designed to be better.™




**EMB Electrical Industries S.A.E.**

**Headquarter office**

Pyramids Heights Office Park  
KM 22 Cairo - Alex. desert road  
Building 1B, 12556  
Tel.: +202 3536 0000  
Fax: +202 3536 0001  
[www.legrand.eg](http://www.legrand.eg)

 [legrand](https://www.facebook.com/legrand)

 [legrandegypt](https://www.instagram.com/legrandegypt)